

SWAROVSKI

CELEBRATING 120 YEARS



HERITAGE. TRADITION. THE ORIGINAL.



PIERRES TAILLÉES DU TYROL
D. Swarovski & Co.
WATZMAN • AUSTRIA

NEW FOR PRE-SEASON FALL/WINTER 2016/17

TREASURES ARE NOT ALWAYS
FOUND IN THINGS THAT SPARKLE.
BUT SOMETIMES THEY ARE.

120 years ago, there was a young man who grew up in a country that was famous for the mastery of refining crystal.

Like his father before him, he learned the trade of crystal cutting. But instead of refinement he wanted perfection.

One day he found the secret of how to cut crystal so that it would sparkle like a gem. To do so, he set up a company in a small town in the Austrian mountains. Here he would use the powers of nature as his ally and under the sign of the edelweiss started producing what was destined to become the most famous crystal in the world.

Thus, the young man ignited a firework of ideas and unleashed a source of inspiration that enchants people to this very day.



DANIEL SWAROVSKI

Thinking way ahead of his time, this young visionary invented a machine that would cut glass into gems - it was his wish to create "a diamond for every lady."

IT DAZZLES
ON CATWALKS AND COUTURE,
ON STAGE AND SCREEN.

It is seen on red carpets and worn by those with blue blood. It is loved by the famous, the creative, and the visionary. Wherever there is glamour, there is crystal. Whenever couture history was made, Swarovski made the look. Whoever took center stage in entertainment, did so in Swarovski.



BECOMING A LEGEND

It was her unprecedented look with breathtaking jewelry featuring Swarovski crystals that made Audrey Hepburn the star of "Breakfast at Tiffany's" – and the style icon of a century.

Audrey Hepburn/Breakfast at Tiffany's
(Paramount, 1961/The Kobal Collection)

TAKING CENTER STAGE

In 2015 when the eyes of millions turned to Hollywood, they saw a spectacular stage set with Swarovski crystals that lent their sparkle to the famous Academy Awards®.

Courtesy of A.M.P.A.S



CELEBRATING BEAUTY

Following their original calling as a "diamond for every lady",
Swarovski crystals are an imperative part of couture jewelry, which they turn into pieces of art.
Parrot brooch, Cohn & Rosenberger, ca.1950



SPARKING IDEAS

Where the power of ideas and the magic of Swarovski crystal meet, beauty will grow.
Crystalactite, Maison Martin Margiela for Swarovski, 2013



RULING THE CATWALK

Swarovski crystal was the material of choice for notable ladies, grand seigneurs, and the couture greats who made fashion history.

Crystal-studded coat by Jean Patou, crystal jewelry by Sylvia Blanchard, Spring/Summer 1969



INSPIRING GENIUS

In the hands of visionaries like the late Alexander McQueen for his Spring/Summer 2009 Collection, Swarovski crystal becomes both a tool and a material for limitless creativity.





HERITAGE. TRADITION. THE ORIGINAL.

The edelweiss, the most precious flower of the Alps, was our company logo for almost a century. Like Swarovski itself, it stands for authenticity and tradition. Celebrating its 120th anniversary, Swarovski has developed the innovative **Edelweiss cut** to commemorate its rich cultural heritage.



COMBINATION POSSIBILITIES

01 **4753** 001 F ^{NEW!}
 02 **5890** 001 650
 03 **5515** 234
 04 **5747** 001
 05 **4470** 001 L105
 06 **6748** 001 ^{NEW!}
 07 **6748** 234 ^{NEW!}

08 **53 731** 088 001
 09 **6531** 001
 10 **5541** 001 BLSH
 11 **2813** 001 F
 12 **67422** 01 213 234 H ^{NEW!}
 13 **2753** 234 F ^{NEW!}
 14 **6019/G** 001 BLSH V

15 **27 004** 001 SSHA F
 16 **4706** 001 BLSH
 17 **80 301** 207
 18 **3201** 001 BLSH F
 19 **4753/G** 001 BLSH F ^{NEW!}



THE INFINITE BEAUTY OF CRYSTAL.

The magic of crystal tells a story with no beginning and no end.
As a tribute to its 120th anniversary, Swarovski celebrates its past,
present, and future, all symbolized in the endlessly
entwined knot of the **Infinity cut**.



COMBINATION POSSIBILITIES

- | | | | | | |
|----|---|----|--|----|------------------------|
| 01 | 2088 001 F | 08 | 1122 001 ROSPA F | 15 | 4706 001 BLSH F |
| 02 | 4568 001 | 09 | 5026 261 | 16 | 5817 001 731 |
| 03 | 67402 01 001 MOL 234 H ^{NEW!} | 10 | 40 601 011 082 001 | 17 | 4470 001 BLSH F |
| 04 | 2555 001 GSHA | 11 | 1790/104 010 001 | 18 | 5328 001 BLSH F |
| 05 | 6792 001 GSHA ^{NEW!} | 12 | 67 402 03 215 001 H ^{NEW!} | 19 | 1088 001 BLSH F |
| 06 | 5542 001 GSHA | 13 | 4320 001 BLSH F | | |
| 07 | 5052 001 GSHA | 14 | 5948 001 SSHA | | |

Product Overview

NEW CRYSTAL ELEMENTS

Fancy Stones & Settings



4753 Edelweiss Fancy Stone
14, 18, 23 mm



4753/G Edelweiss Fancy Stone partly frosted
14, 18, 23 mm



4753/S
14, 18, 23 mm

BeCharmed & Pavé



86 532 BeCharmed Pavé Edelweiss Charm
14 mm

Pendants



6748 Edelweiss Pendant
14, 18, 28 mm



6748/G Edelweiss Pendant partly frosted
14, 18, 28 mm



6792 Infinity Pendant
18 mm



67 402 Pavé Infinity Pendant
20, 26 mm



67 442 Pavé Edelweiss Pendant
14, 20, 26 mm

Pavé Pendants

Flat Backs No Hotfix



2753 Edelweiss Flat Back
10, 14 mm



2753/G Edelweiss Flat Back partly frosted
10, 14 mm

Flat Backs Hotfix



2753 Edelweiss Flat Back
10, 14 mm



2753/G Edelweiss Flat Back partly frosted
10, 14 mm

NEW FORWARD INTEGRATED ELEMENTS

Transfers



2753 Edelweiss Flat Back
10, 14 mm



2753/G Edelweiss Flat Back partly frosted
10, 14 mm

Edelweiss Family

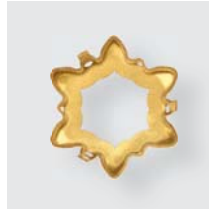
EDELWEISS FAMILY



4753 Edelweiss Fancy Stone



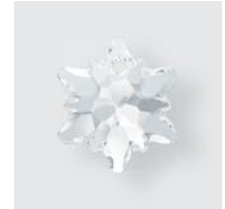
4753/G Edelweiss Fancy Stone partly frosted



4753/S



86 532 BeCharmed Pavé Edelweiss Charm



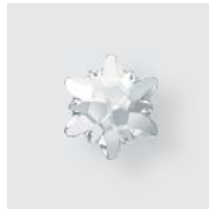
6748 Edelweiss Pendant



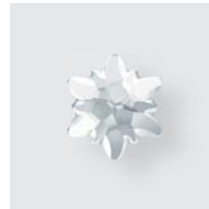
6748/G Edelweiss Pendant partly frosted



67 442 Pavé Edelweiss Pendant



2753 Edelweiss Flat Back available as Hotfix and NoHotfix



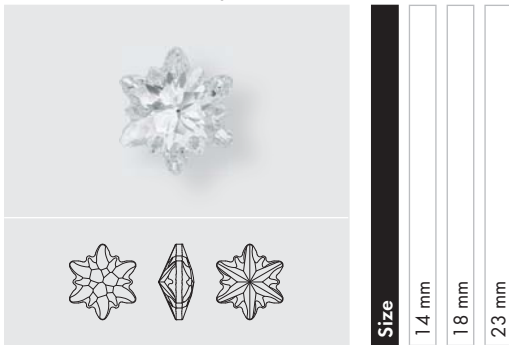
2753/G Edelweiss Flat Back partly frosted available as Hotfix and NoHotfix

THE STORY

Tradition, purity, character. These features have been deeply rooted in the DNA of Swarovski ever since it was first established in 1895. They are also qualities it shares with the most precious and rare yet best-known flower of the Alps: the edelweiss. For this reason the company chose the Alpine edelweiss as its first corporate logo – and kept it for almost a century. Now celebrating its 120th anniversary, Swarovski presents the Edelweiss Family as a tribute to the company's Tyrolean home, with its rich culture and breathtaking surroundings. The stunning crystal reinterpretation of the iconic flower symbolizes the importance of origin in an increasingly globalized world, as well as the beauty that awaits those who dare to climb the highest mountains.

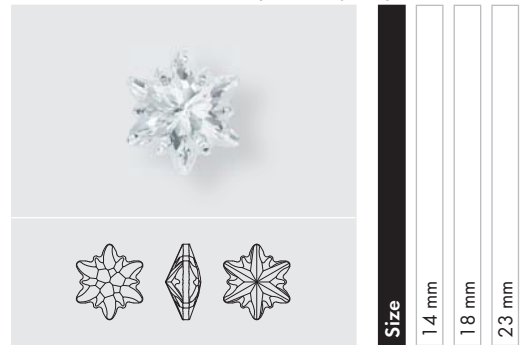
Fancy Stones & Settings

4753 Edelweiss Fancy Stone ^{NEW!}



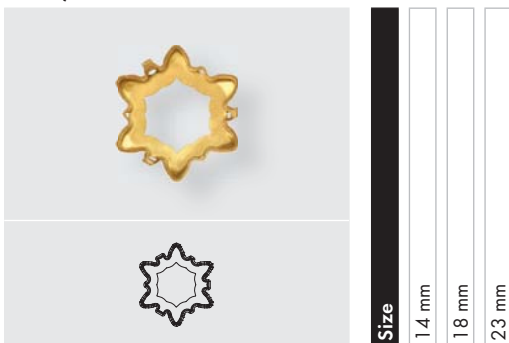
Crystal	14 mm	18 mm	23 mm
Crystal F (001)	■	■	■
Colors			
Plain Colors			
Amethyst F (204)	■	■	
Aquamarine F (202)	■	■	
Light Siam F (227)	■	■	■
Vintage Rose F (319)	■	■	■
Opal Colors			
White Opal F (234)	■	■	■
Crystal Effects			
Transparent Effects			
Crystal AB F (001 AB)	■	■	■
Crystal Blue Shade F (001 BLSH)	■	■	■
Crystal Golden Shadow F (001 GSHA)	■	■	■
Crystal Luminous Green F (001 LUMG)	■	■	■
Crystal Silver Night (001 SINI)	■	■	■

4753/G Edelweiss Fancy Stone partly frosted ^{NEW!}



Crystal	14 mm	18 mm	23 mm
Crystal F (001)	■	■	■
Crystal Effects			
Transparent Effects			
Crystal AB F (001 AB)	■	■	■
Crystal Blue Shade F (001 BLSH)	■	■	■
Crystal Golden Shadow F (001 GSHA)	■	■	■
Crystal Luminous Green F (001 LUMG)	■	■	■
Crystal Silver Night (001 SINI)	■	■	■

4753/S ^{NEW!}

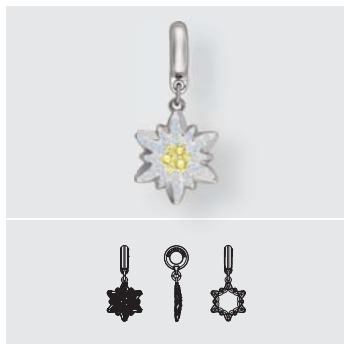


Ring/Hole, Back Configuration	14 mm	18 mm	23 mm
00 C = No ring/hole, closed	■	■	■
H2 O = 4 holes/2 each side, open	■	■	■



ARTICLE EXPLANATION

86 532 BeCharmed Pavé Edelweiss Charm ^{NEW!}



S 14 mm	
M 12 PCS	100%

86 532	S	M	100%
Article number	Size	Minimum Order Quantity in pieces (PCS)	Documentation size in %

EXPLANATION OF "COLOR COMBINATIONS"

All mentioned color combinations are pre-established in terms of

- Color of crystal
 - Color of Ceralun™
 - Color of Platings
- and are not modifiable.

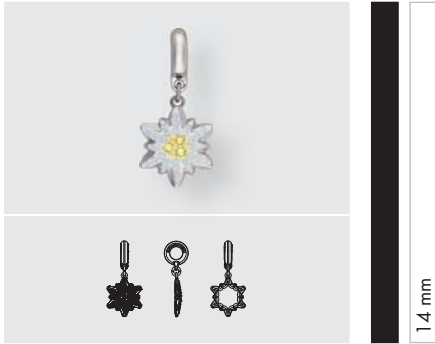
For ordering BeCharmed Pavé Charms please follow the ordering example systematic below.

ORDERING EXAMPLE & PRODUCT VARIETY EXPLANATION

1	86 532	14 mm	01	234 001	H* Rhodium
Material type	Article number	Size	Color of Ceralun™	Color of crystals	Plating
1 Brass			Please see the respective product matrix for all available code references	Please see the respective product matrix for all available code references.	

*Anti nickel allergenic

86 532 BeCharmed Pavé Edelweiss Charm ^{NEW!}



Colors

- White Opal F (234)
- Crystal F (001)
- Finest White (01)

- Light Grey Opal F (383)
- Crystal Moonlight F (001 MOL)
- Finest White (01)

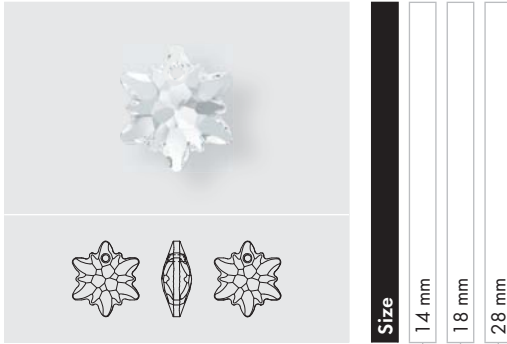
- Jonquil F (213)
- White Opal F (234)
- Finest White (01)

- Vintage Rose F (319)
- Crystal Silver Shade F (001 SSHA)
- Finest White (01)

- Light Smoked Topaz F (221)
- Crystal Golden Shadow F (001 GSHA)
- Pearl Silk (05)

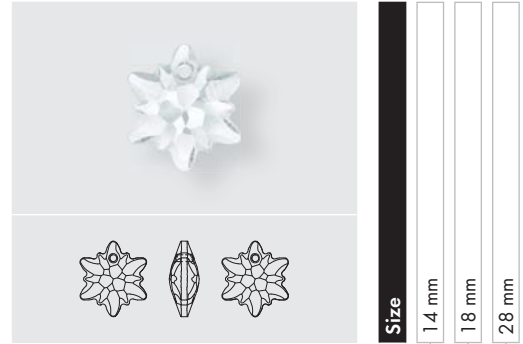
Pendants

6748 Edelweiss Pendant ^{NEW!}



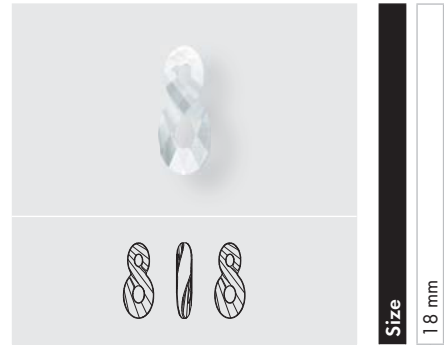
Crystal	14 mm	18 mm	28 mm
Crystal (001)	■	■	■
Colors			
Plain Colors			
Amethyst (204)	■	■	■
Aquamarine (202)	■	■	■
Light Siam (227)	■	■	■
Vintage Rose (319)	■	■	■
Opal Colors			
White Opal (234)	■	■	■
Crystal Effects			
Transparent Effects			
Crystal AB (001 AB)	■	■	■
Crystal Blue Shade (001 BLSH)	■	■	■
Crystal Golden Shadow (001 GSHA)	■	■	■
Crystal Luminous Green (001 LUMG)	■	■	■
Crystal Silver Night (001 SINI)	■	■	■

6748/G Edelweiss Pendant partly frosted ^{NEW!}



Crystal	14 mm	18 mm	28 mm
Crystal (001)	■	■	■
Crystal Effects			
Transparent Effects			
Crystal AB (001 AB)	■	■	■
Crystal Blue Shade (001 BLSH)	■	■	■
Crystal Golden Shadow (001 GSHA)	■	■	■
Crystal Luminous Green (001 LUMG)	■	■	■
Crystal Silver Night (001 SINI)	■	■	■

6792 Infinity Pendant ^{NEW!}



Crystal	18 mm
Crystal (001)	■
Colors	
Plain Colors	
Jet (280)	■
Crystal Effects	
Transparent Effects	
Crystal AB (001 AB)	■
Crystal Golden Shadow (001 GSHA)	■
Crystal Paradise Shine (001 PARSH)	■
Crystal Silver Night (001 SINI)	■
Crystal Silver Shade (001 SSHA)	■
Metallic Effects	
Crystal Metallic Light Gold 2x (001 MLGLD2X)	■
Crystal Rose Gold 2x (001 ROGL2X)	■

Pendants

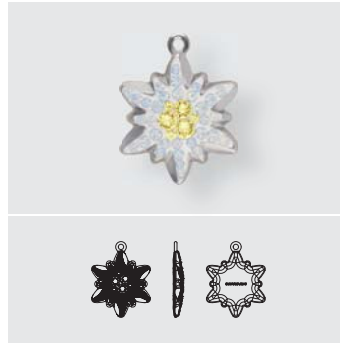
ARTICLE EXPLANATION

67 402 Pavé Infinity Pendant ^{NEW!}



S 20 mm	
M 6 PCS	100%

67 442 Pavé Edelweiss Pendant ^{NEW!}



S 20 mm	
M 6 PCS	100%

67 402	S	M	100%
Article number	Size	Minimum Order Quantity in pieces (PCS)	Documentation size in %

EXPLANATION OF "COLOR COMBINATIONS"

All mentioned color combinations are pre-established in terms of

- Color of crystal
 - Color of Ceralun™
 - Color of Platings
- and are not modifiable.

For ordering Pavé Pendants please follow the ordering example systematic below.

ORDERING EXAMPLE & PRODUCT VARIETY EXPLANATION

1	67 402	20 mm	45	539 371	H* Rhodium
Material type	Article number	Size	Color of Ceralun™	Color of crystals	Plating
1 Brass			Please see the respective product matrix for all available code references	Please see the respective product matrix for all available code references.	

*Anti nickel allergenic

Pendants

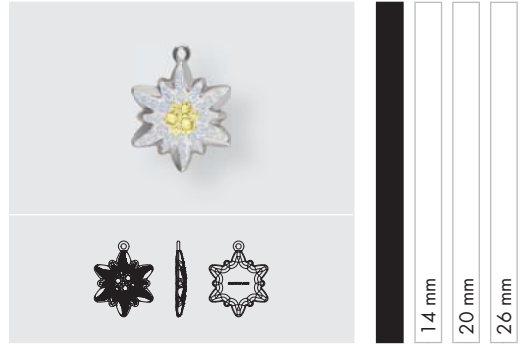
67 402 Pavé Infinity Pendant ^{NEW!}



Colors

- Tanzanite F (539)
- Violet F (371)
- Viola (45)
- Black Diamond F (215)
- Crystal F (001)
- Silver (03)
- Light Peach F (362)
- Silk F (391)
- Pearl Silk (05)
- Aquamarine F (202)
- Light Azore F (361)
- Luminous Blue (24)
- Crystal Moonlight F (001 MOL)
- White Opal F (234)
- Finest White (01)

67 442 Pavé Edelweiss Pendant ^{NEW!}



Colors

- White Opal F (234)
- Crystal F (001)
- Finest White (01)
- Light Grey Opal F (383)
- Crystal Moonlight F (001 MOL)
- Finest White (01)
- Jonquil F (213)
- White Opal F (234)
- Finest White (01)
- Vintage Rose F (319)
- Crystal Silver Shade F (001 SSHA)
- Finest White (01)
- Light Smoked Topaz F (221)
- Crystal Golden Shadow F (001 GSHA)
- Pearl Silk (05)

Flat Backs No Hotfix

2753 Edelweiss Flat Back ^{NEW!}



Crystal

Crystal F (001)

Colors

Plain Colors

Amethyst F (204)

Denim Blue F (266)

Light Siam F (227)

Vintage Rose F (319)

Opal Colors

White Opal F (234)

Crystal Effects

Transparent Effects

Crystal AB F (001 AB)

Crystal Blue Shade F (001 BLSH)

Crystal Golden Shadow F (001 GSHA)

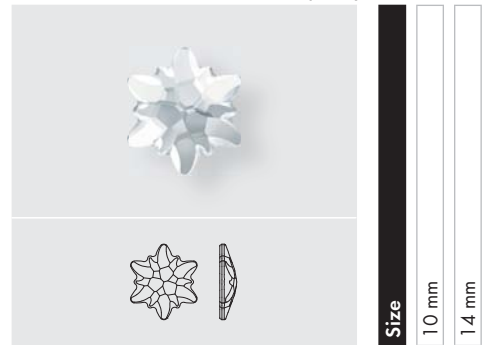
Crystal Luminous Green F (001 LUMG)

Crystal Silver Night (001 SINI)

Metallic Effects

Crystal Metallic Sunshine F (001 METSH)

2753/G Edelweiss Flat Back partly frosted ^{NEW!}



Crystal

Crystal F (001)

Crystal Effects

Transparent Effects

Crystal AB F (001 AB)

Crystal Blue Shade F (001 BLSH)

Crystal Golden Shadow F (001 GSHA)

Crystal Luminous Green F (001 LUMG)

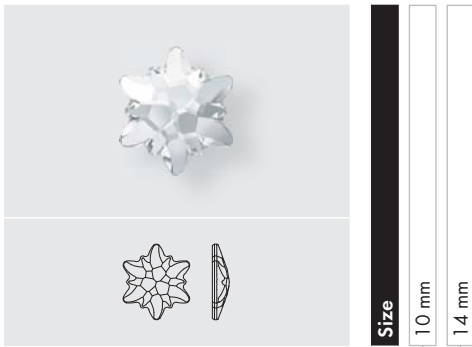
Crystal Silver Night (001 SINI)

Metallic Effects

Crystal Metallic Sunshine F (001 METSH)

Flat Backs Hotfix

2753 Edelweiss Flat Back ^{NEW!}



Crystal	10 mm	1.4 mm
Crystal M HF (001)	■	■
Colors		
Plain Colors		
Amethyst M HF (204)	■	■
Denim Blue M HF (266)	■	■
Light Siam M HF (227)	■	■
Vintage Rose M HF (319)	■	■
Opal Colors		
White Opal M HF (234)	■	■
Crystal Effects		
Transparent Effects		
Crystal AB M HF (001 AB)	■	■
Crystal Blue Shade M HF (001 BLSH)	■	■
Crystal Golden Shadow M HF (001 GSHA)	■	■
Crystal Luminous Green M HF (001 LUMG)	■	■
Crystal Silver Night M HF (001 SINI)	■	■
Metallic Effects		
Crystal Metallic Sunshine M HF (001 METSH)	■	■

2753/G Edelweiss Flat Back partly frosted ^{NEW!}



Crystal	10 mm	1.4 mm
Crystal M HF (001)	■	■
Crystal Effects		
Transparent Effects		
Crystal AB M HF (001 AB)	■	■
Crystal Blue Shade M HF (001 BLSH)	■	■
Crystal Golden Shadow M HF (001 GSHA)	■	■
Crystal Luminous Green M HF (001 LUMG)	■	■
Crystal Silver Night M HF (001 SINI)	■	■
Metallic Effects		
Crystal Metallic Sunshine M HF (001 METSH)	■	■

APPLICATION ADVICE

Art. 2753 Edelweiss Flat Back Hotfix & Art. 2753/G Edelweiss Flat Back Hotfix partly frosted can be easily applied by using a standard heat press.

To fix and keep the crystals in position and also to be able to turn the fabric, the usage of a transfer film may be helpful. For a satisfying bonding, please pay close attention to activate the adhesive also on the edges. Right after the application, use a pressing cloth to apply additional pressure to the product and do not remove the transfer film until the fabric and the crystals are fully cooled.

The following parameter should give you an overview about the possibilities of applying this product onto different fabrics. In order to ensure the right conditions and to establish the best choice of application aids, we strongly recommend carrying out tests with the original fabrics.

Flat Backs Hotfix

APPLICATION FROM THE BACK



APPLICATION FROM THE FRONT

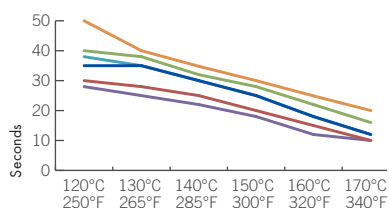


CREATION TRANSFERS PLUS

These items are **NOT** suitable for application from the front!

	Temperature/time required (in seconds)					
	120 °C 250 °F	130 °C 265 °F	140 °C 285 °F	150 °C 300 °F	160 °C 320 °F	170 °C 340 °F
Reference fabric	35	35	30	25	18	12
Silk, batiste, cotton jersey, thin linen fabrics, etc.	30	28	25	20	15	10
Jeans, cord, loden, cloth, knitted fabrics, etc.	40	38	32	28	22	16
Viscose, satin, chiffon, organza, taffeta, etc.	28	25	22	18	12	10
LYCRA®, neoprene, etc.	38	35	30	25	18	12
Artificial fur, artificial leather, fleece, suede, etc.	50	40	35	30	25	20

Pressure: medium
Aids: Teflon®, pressing cloth



Please refer to the Application Manual and our Business Website SWAROVSKI.COM/PROFESSIONAL for detailed information on the application.

CARE INSTRUCTIONS

GENERAL RECOMMENDATIONS	Turn inside out and use mild laundry detergent.	Do not use chlorine bleach!	Do not tumble dry!	Do not iron!	The textile can be gently dry-cleaned using perchloroethylene. Turn inside out.	The textile can be gently dry-cleaned using hydrocarbon. Turn inside out.	The textile will withstand gentle professional wet-cleaning. Turn inside out.
				Do not iron directly over the crystals!	To protect the crystals as much as possible, the use of a soft wash bag is recommended.		
EDELWEISS FLAT BACKS	✓	✓	✓	✓		✓	✓

Please note that with all standard washing processes (whether carried out by a household washing machine or via dry cleaning) the rotation of the drum places significant mechanical forces on the textiles. The most important factor in ensuring a secure wash is correctly applying the product, without compromising its adhesion. The larger the product employed, and the more products are applied next to each other, the greater the risk of damage. Swarovski products are made out of crystal or contain crystal and must thus be handled with suitable care.

TRANSFERS

Art. 2753 Edelweiss Flat Back Hotfix & Art. 2753/G Edelweiss Flat Back Hotfix partly frosted are available within the Transfers assortment.

Product Details Crystal Elements

Article Size	Packing Unit = Minimum Order Quantity in Pieces	Average Net Weight in Gram per Packing Unit Crystal (001)	Average Gross Weight in Gram per Packing Unit Crystal (001)
4753			
14 mm	36	32.58	53.18
18 mm	24	42.94	60.26
23 mm	18	71.87	101.47
4753/G			
14 mm	36	32.51	53.11
18 mm	24	47.62	64.94
23 mm	18	71.73	101.33
6748			
14 mm	72	65.30	89.98
18 mm	48	88.32	110.17
28 mm	18	115.69	145.35
6748/G			
14 mm	72	63.50	88.18
18 mm	48	82.27	104.12
28 mm	18	115.25	144.91
6792			
18 mm	48	30.72	56.12
2753			
10 mm	72	15.84	203.40
14 mm	36	20.16	40.76
2753/G			
10 mm	72	16.49	35.57
14 mm	36	21.06	41.66
2753 HF			
10 mm	72	15.84	203.40
14 mm	36	20.16	40.76
2753/G HF			
10 mm	72	16.49	35.57
14 mm	36	21.06	41.66

General Warning

Loose crystals may present a small parts hazard to young children, particularly children under three years old. Depending on the size of the crystal and any attached material (such as glue, fabric, etc.), children may choke on, inhale, swallow, or insert the crystal into their noses. Magnetic products with crystal applications pose a particular risk of serious intestinal injury if ingested. The application techniques as stated in the Application Manual do not guarantee that crystals will not come loose. For each application, the manufacturer must determine whether the product meets the relevant requirements related to small parts hazards and assess any risk it may pose to small children. Failure to follow Swarovski's care instructions may result in damage to the crystal, which could pose a risk of laceration or other harm.

Warning for Crystal Tattoos

Crystal Tattoos may be applied on healthy skin only. Do not adhere to eyes or on mucous membranes. Crystal Tattoos are not recommended for young children. Loose crystals may present a small parts hazard to young children, particularly children under three years old. If a crystal comes loose, depending on the size of the crystal, children may choke on, inhale, swallow, or insert the crystal into their noses.

Warning for Tableware

Application of loose crystals to tableware presents a potential risk of aspiration, choking, swallowing, or tooth damage should crystals become loose. To reduce this risk, crystals should never be applied to any surface of tableware likely to come in contact with food or the mouth, and crystals should never be placed on any tableware intended for use by children. Tableware with crystals intended for decorative use only should be marked as such. To avoid dishwasher damage, tableware decorated with crystals should be washed by hand. The application techniques or suggestions in this manual do not guarantee that crystals will not come loose. For each application, the manufacturer must determine whether the product meets relevant requirements related to small parts hazards or use in food contact items and assess any risk it may pose to users. The use of crystals (which may contain restricted substances deemed hazardous under local laws) and adhesives on tableware is subject to legal restrictions in specific countries. The customer is fully responsible to comply with these country-specific provisions and shall defend, indemnify, and hold Swarovski harmless from any and all third-party claims based on product liability or otherwise relating to uses of Swarovski products and waives all its own claims against Swarovski.

Notice for Application on Packaging

The use of crystal that may contain substances like lead, cadmium or hexavalent chromium, on packaging is subject to legal restrictions in specific countries, including but not limited in regard to the total content of substances based on the proportion between crystal mass to the remaining weight of packaging. The customer is fully responsible to comply with these country-specific provisions and to pass on this information to his customers.

Care Instructions

Failure to follow Swarovski's care instruction may result in damage to the Swarovski product, which could pose a risk of laceration or other harm. Please be informed that all conventional laundering processes (household washing machine as well as professional dry-cleaning) have a considerable mechanical influence onto the garment, which is based on the rotation of the washing drum. The essential requirement for a safety laundering process is that the Swarovski products are properly applied without restrictions regarding the adherence of the Swarovski products. The bigger the size of the used Swarovski product is and the more Swarovski products are applied next to each other, the more a risk of damage has to be taken into consideration. Swarovski products are made of or incorporate crystal and therefore must be handled with due care! Generally, to best protect the Swarovski products from breaking we recommend the use of a soft washing bag and to fill up the washing drum. Turning inside out before washing and selection of a gentle washing program, plus the use of mild detergents are important prerequisites to safeguard the quality of our Swarovski products. Our care instructions based on DIN EN ISO 3758 list up all Swarovski product groups as overview so that each used Swarovski product still needs to be judged in terms of its cleaning suitability for the intended purpose and finished product by the customer. Swarovski's recommendations are given according to the current state of our knowledge and Swarovski's determination of the qualification as textile application product. The customer is therefore fully responsible to determine the cleaning process applicable to the finished product, taking the Swarovski care instructions as well as those of third party materials into account. The variety of shape, cut, surface effect, size and application weight respectively amount of used Swarovski products are decisive for the determination of the suitable cleaning process. To be entirely safe customers respectively dry-cleaners usually take off Sew-on Stones, Buttons, etc. of bigger size before cleaning and re-apply them afterwards.

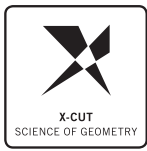
Unsuitable Applications

Crystals from Swarovski are intended for use in the fields of fashion, jewelry, accessories, textile products, and for interior décor. Due to their physical properties, crystals from Swarovski are unsuitable for other uses (e.g. gluing onto teeth, using crystals on or near mucous membranes, and other unsafe uses). The customer shall defend, indemnify and hold Swarovski harmless from any and all third-party claims based on product liability or otherwise relating to uses of Swarovski products purchased by the customer, and waives all its own claims.

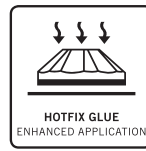
Responsibility of User

Any oral, written, or test-based advice that Swarovski provides regarding techniques for application of its products are recommendations based on Swarovski's current knowledge and the information provided by its suppliers. Such advice does not discharge the customer from carrying out its own tests of techniques it proposes to use and their suitability for the intended application. The application, use, and processing of these techniques and products are solely the user's responsibility.

EXCELLENCE, THROUGH INNOVATION AND ORIGIN



X-CUT
Advanced optical measurement and high-precision manufacturing deliver premium cuts characterized by unmatched brilliance.



HOTFIX GLUE
The variable temperatures at which Hotfix glue can be activated enable the application of crystals on a broad range of textiles.



PLATINUM PRO
With its new advanced foiling technique, Swarovski has set a new standard in the lifespan of crystals.



CRYSTALS - MADE IN AUSTRIA
The combination of innovation with sustainability and respect for individual wellbeing means that quality is always assured.

PREMIUM, BY SERVICE AND DESIGN



DESIGN SERVICE
Throughout its global network of Design Centers, Swarovski offers exceptional service provided by the industry's best creative talent.



GLOBAL SERVICE
Swarovski's Global Service Network provides customers with dedicated personal assistance on a local level.



APPLICATION SERVICE
A comprehensive range of application services means customers benefit from the extensive experience of leading international experts, as well as internal specialists.



DESIGNER EDITIONS
Creative collaborations with top designers result in exclusive cuts and unique designs for Swarovski crystal.

COMPLIANCE, WITH INTEGRITY



ADVANCED CRYSTAL
Swarovski's patented lead-free* formula has changed the DNA of crystal while still offering the same sparkle, dependability, and variety for which Swarovski is famous.



CLEAR
Regular legal monitoring of chemical requirements and reasonable testing provide customers with the comfort of trust in Swarovski's products.

*Crystal glass and all other materials containing 0.009% lead or less.



OEKO-TEX
Oeko-Tex® Standard 100 Class II (direct contact with skin) certification creates confidence in chemical safety of textile applications.

EUROPE & AFRICA

For Austria, Germany, Switzerland, Benelux, Scandinavia, UK, Ireland, France, Spain, Portugal, Greece, Africa and Eastern Europe, please contact
SWAROVSKI INTERNATIONAL DISTRIBUTION AG Triesen:

SWAROVSKI international distribution ag
 Dröschstrasse 15
 Postfach 567
 9495 Triesen
 Liechtenstein
 Tel: +423 399 5757
 Fax: +423 399 5750
 sp.infoLI@swarovski.com

SWAROVSKI INT.LE D'ITALIA S.P.A. SOCIETA' A SOCIO UNICO
 Via Giorgio Giulini n.3
 20123 Milano
 Italy
 Tel: +39 02 722601
 sp.IT@swarovski.com

SWAROVSKI OOO
 BC "Sadovaya Plaza"
 Dolgorukovskaya str., h.7, floor 12
 127006 Moscow
 Russia
 Tel: +7 495 789 68 44
 Fax: +7 (495) 258 8903
 sp.infoLI@swarovski.com

SWAROVSKI KRISTAL TIC.LTD.STI.
 Abdi İpekçi Cad. Reasürans Han E Blok, No:57 Kat:5
 34367 Nişantaşı Şişli, İstanbul
 Turkey
 Tel: +90 (0) 212 225 44 29
 Fax: +90 (0) 212 225 27 99
 Swarovski.Turkey@swarovski.com

MIDDLE EAST

SWAROVSKI MIDDLE EAST FZE
 P.O. Box 17128, Jebel Ali Free Zone
 Dubai
 United Arab Emirates
 Tel: +971 4 881 6562
 Fax: +971 4 881 5623
 info.sme@swarovski.com

SWAROVSKI Dubai LLC
 P.O. Box 117645
 Office No 107, Golf Park Building
 Garhoud, Dubai
 United Arab Emirates
 Tel: +971 4 2822027
 Fax: +971 4 2822866
 office.dubai@swarovski.com

South India Contact Office:
SWAROVSKI INDIA PVT. LTD.
 101 Swarovski India
 1st Floor Sufiya Elite
 18/9 Cunningham Rd
 Bangalore - 560052
 India
 Tel: +91 124 - 4698263, 4698264, 4698249
 nirupama.nair@swarovski.com
 customer_service.in@swarovski.com

South India Contact Office:
 Saleh Center
 No. 103, 1st Floor,
 18/9 Cunningham Road
 Bangalore - 560052
 India
 Tel: +91 80 30279870
 Fax: +91 80 30279866
 nirupama.nair@swarovski.com

NORTH & SOUTH AMERICA

SWAROVSKI CRYSTAL COMPONENTS LTDA.
 Alameda Itu, 852 - 13° Andar
 01421-001 São Paulo - SP
 Brazil
 Tel: +55 11 3088 8821 (ext. 121)
 Fax: +55 11 3088 5976
 comercial.br@swarovski.com

SWAROVSKI NORTH AMERICA LTD.
 1 Kenney Drive, Cranston
 Rhode Island 02920-4400
 USA
 Tel: +1 401 463 5132
 Fax: +1 401 463 4707
 Toll free: 1 800 463 0849
 sp.sna@swarovski.com

SWAROVSKI NORTH AMERICA LTD.
 Los Angeles Showroom,
 California Mart
 110 East 9th Street, Suite B771
 Los Angeles, CA 90079-2827
 USA
 Tel: +1 213 489 2393
 Fax: +1 213 489 1961

SWAROVSKI CRYSTAL S.A. DE C.V., MEXICO
 Av. Ejército Nacional No. 579
 Piso 11, Local A
 Col. Granada
 Del. Miguel Hidalgo
 C.P. 11520
 México D.F.
 Tel/Fax: +5255 5545 4509

ASIA

SWAROVSKI HONG KONG LTD.
 9th Floor, Fortis Centre,
 1063 King's Road
 Quarry Bay
 Hong Kong
 Tel: +852 2566 6301
 Fax: +852 2807 1902
 sp.infoHK@swarovski.com

SWAROVSKI (GUANGZHOU) TRADING COMPANY LTD.
 Rm 2401-2403, 24/F, Teemtower,
 Teemall
 208 Tianhe Road
 Guangzhou 510620
 China
 Tel: +86 20 3813 2188
 Fax: +86 20 3810 2278
 Toll Free: +86 400 880 1744
 sp.infoCN@swarovski.com

SWAROVSKI (GUANGZHOU) TRADING COMPANY LTD.
 Beijing Liaison Office
 Room 2001-2002,
 20/F, Tower B, Gemdale Plaza,
 No. 91, Jianguo Road,
 Chaoyang District,
 Beijing 100020
 China
 Tel: 010-65829773

SWAROVSKI (GUANGZHOU) TRADING COMPANY LTD.
 Shanghai Liaison Office
 Room 1602,
 The Headquarters Building
 No. 168, Xi Zang Road (M)
 Shanghai 200001
 China
 Tel: +86 21 2306 9945
 Fax: +86 21 6372 9180

SWAROVSKI (GUANGZHOU) TRADING COMPANY LTD.
 Dongguan Liaison Office
 Room 2202, Kingdom Plaza
 Central Road of East Downtown
 Dongguan City 523129
 China
 Tel: +86 769 2276 4723
 Fax: +86 769 2276 4708

SWAROVSKI (GUANGZHOU) TRADING COMPANY LTD.
 Qingdao Liaison Office
 Art & Technology Space
 Room No 1-506
 No. 63, Haier Road
 Qingdao 266061
 China
 Tel: +86 532 8099 9595
 Fax: +86 532 8099 9596

SWAROVSKI (GUANGZHOU) TRADING COMPANY LTD.
 Yiwu Liaison Office
 Room 8911, Yinlian International
 Business Building
 No. 1399, Chouzhou Road (North),
 Yiwu City, 322000
 Zhejiang Province
 China
 Tel: +86 579 8559 0903
 Fax: +86 579 8559 0707

SWAROVSKI (GUANGZHOU) TRADING COMPANY LTD.
 Shenzhen Liaison Office
 Room 13G, Tower C, Neo Building
 6009 Shennan Avenue,
 Futian District
 ShenZhen 518048
 China
 Tel: +86 755 23605750
 Fax: +86 755 23605735

SWAROVSKI (GUANGZHOU) TRADING COMPANY LTD.
 Chengdu Liaison Office
 Room 3908, Huamin Empire Plaza, 1
 Fuxing Street
 Jinjiang District, Chengdu, Sichuan
 China
 Tel: +86 28 8658 3506
 Fax: +86 28 8658 3535

Swarovski Worldwide

Swarovski Taiwan LIMITED TAIWAN BRANCH

3/F, No. 27, Chung-Shan North Road
Section 1, Taipei 104
Taiwan, R.O.C.
Tel: +886 2 2100 2611
Fax: +886 2 2100 2622
sp.infotw@swarovski.com

SWAROVSKI SINGAPORE TRADING PTE. LTD.

2, Alexandra Road
#03-01 Delta House
Singapore 159919
Singapore
Tel: +65 6661 6333
Fax: +65 6274 8177
sp.infosg@swarovski.com

PT CRYSTALLIZED ELEMENTS

Cyber 2 Tower, 31st Floor Unit B
JL. HR. Rasuna Said, Blok X5 No. 13
Jakarta 12950
Indonesia
Tel: +62 21 2902 1451 / 52 / 53
Fax: +62 21 2902 1454
ptcrystallized.id@swarovski.com

Swarovski Singapore Pte. Ltd.

(Vietnam Representative Office)
Level 16 & 17, Gemadept Tower,
6, Le Thanh Ton Street,
Ward Ben Nghe, District 1,
Ho Chi Minh City, Vietnam
Tel: +84 8 62556768
Fax: +84 8 62556801
jeffrey.tan@swarovski.com

SWAROVSKI (THAILAND) LTD.

849 Vorawat Building, 16th Floor,
Room 1601 - 1602,
Silom Road, Silom, Bangrak,
Bangkok 10500
Thailand
Tel: +662 635 1990
Fax: +662 635 1585
sthspmarketing@swarovski.com

SWAROVSKI KOREA LTD.

BaekYoung Building 13F(SP)
(6 Cheongdam-dong) 456 Dosan-
daero, Gangnam-gu,
Seoul, Korea 135-949
Tel: +82 2 6930 9975
Fax: +82 2 3416 0336
Lucia.kim@swarovski.com

SWAROVSKI JAPAN LTD.

Shinagawa Grand Central Tower, 3F
2-16-4 Konan, Minato-ku
Tokyo, 108-0075
Japan
Tel: +81 3 6718 2382
Fax: +81 3 6718 2383
sp.infoJP@swarovski.com

NEW ZEALAND

SWAROVSKI INTERNATIONAL (NZ) LTD.

9B Vega Place, Rosedale
North Shore City 0632
New Zealand
Tel: +64 9970 3750
Fax: +61 2 8345 7296
elementsenquiries.sau@swarovski.com

AUSTRALIA

SWAROVSKI INTERNATIONAL (AUSTRALIA) PTY. LTD.

23-25 Rosebery Avenue
P.O. Box 185 (N.S.W 1445)
Rosebery N.S.W. 2018
Australia
Tel: +61 2 8345 7200
Fax: +61 2 9313 6506
daniel.wright@swarovski.com

SWAROVSKI CORPORATE BRANDING & COMMUNICATION

LONDON

CORPORATE COMMUNICATIONS AND DESIGN SERVICES, SWAROVSKI CRYSTAL BUSINESS

2nd Floor
21 Sackville Street
London, W1S 3DN
United Kingdom
Tel: +44 (0) 20 7255 8400
Fax: +44 (0) 20 7255 8473
www.swarovski.tv
www.swarovskisparkles.com
www.atelierswarovski.com
www.swarovskicrystalpalace.com

LOS ANGELES

SWAROVSKI NORTH AMERICA LTD.

Los Angeles Showroom,
California Mart
110 E. 9th Street, Suite B771
Los Angeles, CA 90079-2827
USA
Tel: +1 213 489 2393
Fax: +1 213 489 1961

Swarovski Corporate Communications Unit & Creative Services Center

8560 W. Sunset Blvd., Suite 200
West Hollywood, CA 90069
Los Angeles
Tel: +1 310 652 0089 x3813
Fax: +1 310 652 0951

DUBAI

Swarovski Middle East FZE

P. O. Box 17128, Jebel Ali Free Zone
Dubai
United Arab Emirates
Tel: +971 4 881 6562
Fax: +971 4 881 5623
grace.downes@swarovski.com
palak.bhati@swarovski.com

MILAN

SWAROVSKI INT.LE D'ITALIA S.P.A. SOCIETA' A SOCIO UNICO

Via Giorgio Giulini n.3
20123 Milano
Italy
Tel: +39 02 722601
stefania.fedeli@swarovski.com

NEW YORK

Swarovski Creative Service Center

810 7th Avenue, 24th Floor
New York, NY 10019
USA
Tel: +1 212 935 4200
Fax: +1 212 935 8800
Toll free: 1 877 888 7980

PARIS

Swarovski France S.A.S.

15, Boulevard Poissonnière
75002 Paris
France
Tel: +33 1 4476 1515
cic.france@swarovski.com

SÃO PAULO

Swarovski Crystal Components Ltda.

Alameda Itu, 852-13º Andar
01421-001 São Paulo - SP
Brazil
Tel: +55 11 3088 8821
Fax: +55 11 3088 5976
comercial.br@swarovski.com

WATTENS

D. Swarovski KG

6112 Wattens
Austria
Tel: +43 5224 500 3307
Fax: +43 5224 501 3307
sandra.oconnor@swarovski.com

SWAROVSKI TREND & APPLICATION CENTERS WORLDWIDE

HONG KONG

9th Floor, Fortis Centre,
1063 King's Road
Quarry Bay, Hong Kong
Hong Kong
Tel: +852 2566 6301
Fax: +852 2807 1902

BEIJING

Rm 2001-2002, 20 F, Tower B,
Gemdale Plaza, No. 91,
Jianguo Road, Chaoyang District
Beijing 100020
China
Tel: 010-65829773

SHANGHAI

Room 1602
The Headquarters Building
No. 168, Xi Zang Road (M)
Shanghai 200001
China
Tel: +86 21 2306 9945
Fax: +86 21 6372 9180

GUANGZHOU

Rm 2401-2403, 24/F, Teemtower,
Teemall
208 Tianhe Road
Guangzhou 510620
China
Tel: +86 20 3813 2188
Fax: +86 20 3810 2278
Toll Free: +86 400 880 1744

BANGKOK

Swarovski (Thailand) Ltd.

849 Vorawat Building, 16th Floor,
Room 1601 - 1602,
Silom Road, Silom, Bangrak
Bangkok 10500
Thailand
Tel: +662 635 1990
Fax: +662 635 1585
sirikarn.ngamboosin@swarovski.com

TOKYO JAPAN TAC

Swarovski Japan Ltd.

Shinagawa Grand Central Tower, 3F
2-16-4 Konan, Minato-ku
Tokyo, 108-0075
Japan
Tel: +81 3 6718 2382
Fax: +81 3 6718 2383
sp.infoJP@swarovski.com

VALID FROM MAY 2015

Sys.No. 5186296

Content is subject to change without notice. Errors and misprints excepted.

D. Swarovski Distribution GmbH, Swarovskistrasse 30, 6112 Wattens, Austria

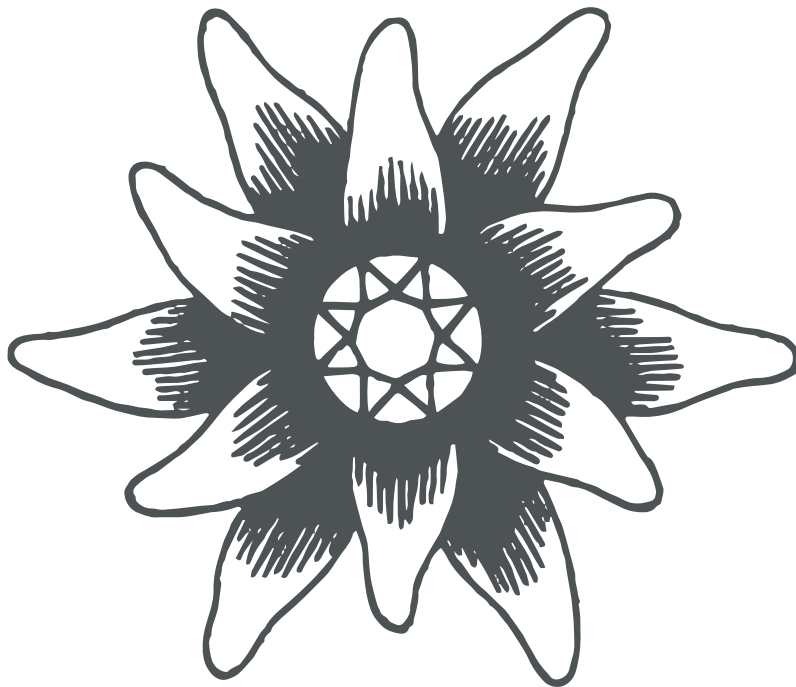
© 2015 D. Swarovski Distribution GmbH. All rights reserved. Partial or total publication, transmission, copy or other duplication of texts, graphics, pictures etc. which are to be found in this publication is forbidden without special consent by D. Swarovski Distribution GmbH.

Swarovski® is a registered trademark of Swarovski AG.

ART DIRECTION by in the headroom

PHOTOGRAPHY by Robert Striegl, Athesia-Laserpoint

PRINTED by RWF Frömelt-Hechenleitner Werbeges.m.b.H., Volders/Austria



PIERRES TAILLÉES DU TYROL

D. Swarovski & Co.

Wattens • Autriche

SWAROVSKI.COM/PROFESSIONAL