



04

BECHARMED & PAVÉ

The BeCharmed & Pavé assortment, ranging from different Crystal and Pavé Beads to Stoppers, Crystal and Pavé Charms in a brilliant array of colors and effects, offering unlimited combination possibilities. All products in this unique line feature a high quality stainless steel part with Swarovski branding and a 4.5 mm-diameter hole, which is the standard size for existing charm concepts, making BeCharmed ideal collectible pieces. Use them to create a look that is unique to you and mark life's unforgettable moments. In combination with our sparkling Pavé Ball and the versatile applicable Pavé Thread Ring, they are also perfect for creating delicate and individual jewelry sets.

COLORS & EFFECTS

OPEN TO SEE COLORS & EFFECTS

COLORS

	Crystal 001		Indian Sapphire 217
	White Opal 234		Denim Blue 266
	Silk 391		Black Diamond 215
	Light Peach 362		Pacific Opal 390
	Rosaline 508		Chrysolite Opal 294
	Vintage Rose 319		Chrysolite 238
	Blush Rose 257		Peridot 214
	Light Rose 223		Erinite 360
	Hyacinth 236		Fern Green 291
	Light Siam 227		Emerald 205
	Indian Siam 327		Palace Green Opal 393
	Rose 209		Olivine 228
	Fuchsia 502		Greige 284
	Ruby 501		Light Grey Opal 383
	Siam 208		Light Colorado Topaz 246
	Garnet 241		Jonquil 213
	Amethyst 204		Light Topaz 226
	Cyclamen Opal 398		Topaz 203
	Tanzanite 539		Tangerine 259
	Violet 371		Light Smoked Topaz 221
	Light Amethyst 212		Smoked Topaz 220
	Light Sapphire 211		Smoky Quartz 225
	Light Azore 361		Mocca 286
	Aquamarine 202		Jet 280
	Air Blue Opal 285		
	Sapphire 206		
	Dark Indigo 288		
	Montana 207		
	Caribbean Blue Opal 394		
	Light Turquoise 263		
	Blue Zircon 229		
	Indicolite 379		

CERAMICS

	Marbled Light Grey 657
	Marbled Terracotta 655
	Marbled Yellow 652
	Marbled Blue 654
	Marbled Black 653

EFFECTS

	Crystal Silver Shade 001 SSHA		Crystal Bronze Pearl 001 295
	Crystal Moonlight 001 MOL		Crystal Rose Gold Pearl 001 769
	Crystal Aurora Boreale 001 AB		Crystal Rosaline Pearl 001 294
	Crystal Luminous Green* 001 LUMG		Crystal Rose Peach Pearl 001 674
	Crystal Golden Shadow 001 GSHA		Crystal Lavender Pearl 001 524
	Crystal Metallic Sunshine* 001 METSH		Crystal Burgundy Pearl 001 301
	Crystal Rose Gold* 001 ROGL		Crystal Iridescent Purple Pearl 001 943
	Crystal Copper* 001 COP		Crystal Iridescent Red Pearl 001 947
	Crystal Astral Pink 001 API		Crystal Scarabaeus Green*** Pearl 001 946
	Crystal Red Magma* 001 REDM		Crystal Iridescent Green Pearl 001 930
	Crystal Antique Pink* 001 ANTP		Crystal Light Grey Pearl 001 616
	Crystal Paradise Shine 001 PARSH		Crystal Platinum Pearl 001 459
	Crystal Lilac Shadow 001 LISH		Crystal Grey Pearl 001 731
	Crystal Bermuda Blue** 001 BBL		Crystal Black Pearl 001 298

GEMCOLORS

	Crystal Ivory Pearl 001 708		Crystal Pink Coral Pearl 001 716
	Crystal Coral Pearl 001 816		Crystal Red Coral Pearl 001 718
	Crystal Turquoise Pearl 001 709		Crystal Lapis Pearl 001 717
	Crystal Dark Lapis Pearl 001 719		Crystal Jade Pearl 001 715
	Crystal Mystic Black Pearl 001 335		

COLORS

	Crystal White Pearl 001 650
	Crystal Cream Pearl 001 620
	Crystal Creamrose Pearl 001 621
	Crystal Pearlescent White Pearl 001 969
	Crystal Gold Pearl 001 296
	Crystal Vintage Gold Pearl 001 651

CRYSTAL PASTEL PEARL COLORS

	Crystal Pastel Yellow Pearl 001 945
	Crystal Pastel Rose Pearl 001 944
	Crystal Pastel Blue Pearl 001 966
	Crystal Pastel Green Pearl 001 967
	Crystal Pastel Grey Pearl 001 968

NUMERICAL ORDER

001	Crystal	001 947	Crystal Iridescent Red Pearl	205	Emerald	280 NUT	Jet Nut*
001 294	Crystal Rosaline Pearl	001 966	Crystal Pastel Blue Pearl	206	Sapphire	284	Greige
001 295	Crystal Bronze Pearl	001 967	Crystal Pastel Green Pearl	207	Montana	285	Air Blue Opal
001 296	Crystal Gold Pearl	001 968	Crystal Pastel Grey Pearl	208	Siam	286	Mocca
001 298	Crystal Black Pearl	001 969	Crystal Pearlescent White Pearl	209	Rose	288	Dark Indigo
001 301	Crystal Burgundy Pearl	001 AB	Crystal Aurora Boreale	211	Light Sapphire	291	Fern Green
001 335	Crystal Mystic Black Pearl	001 ANTP	Crystal Antique Pink*	212	Light Amethyst	294	Chrysolite Opal
001 459	Crystal Platinum Pearl	001 API	Crystal Astral Pink	213	Jonquil	319	Vintage Rose
001 524	Crystal Lavender Pearl	001 BBL	Crystal Bermuda Blue**	214	Peridot	327	Indian Siam
001 616	Crystal Light Grey Pearl	001 BLSH	Crystal Blue Shade*	215	Black Diamond	360	Erinite
001 620	Crystal Cream Pearl	001 BRSH	Crystal Bronze Shade*	217	Indian Sapphire	361	Light Azore
001 621	Crystal Creamrose Pearl	001 CAL	Crystal Comet Argent Light*	220	Smoked Topaz	362	Light Peach
001 650	Crystal White Pearl	001 COP	Crystal Copper*	221	Light Smoked Topaz	371	Violet
001 651	Crystal Vintage Gold Pearl	001 GSHA	Crystal Golden Shadow	223	Light Rose	379	Indicolite
001 674	Crystal Rose Peach Pearl	001 IRIG	Crystal Iridescent Green*	225	Smoky Quartz	383	Light Grey Opal
001 708	Crystal Ivory Pearl	001 LISH	Crystal Lilac Shadow	226	Light Topaz	390	Pacific Opal
001 709	Crystal Turquoise Pearl	001 LUMG	Crystal Luminous Green*	227	Light Siam	391	Silk
001 715	Crystal Jade Pearl	001 METBL	Crystal Metallic Blue*	228	Olivine	393	Palace Green Opal
001 716	Crystal Pink Coral Pearl	001 METSH	Crystal Metallic Sunshine*	229	Blue Zircon	394	Caribbean Blue Opal
001 717	Crystal Lapis Pearl	001 MLGLD	Crystal Metallic Light Gold*	234	White Opal	398	Cyclamen Opal
001 718	Crystal Red Coral Pearl	001 MOL	Crystal Moonlight	236	Hyacinth	501	Ruby
001 719	Crystal Dark Lapis Pearl	001 PARSH	Crystal Paradise Shine	238	Chrysolite	502	Fuchsia
001 731	Crystal Grey Pearl	001 REDM	Crystal Red Magma*	241	Garnet	508	Rosaline
001 769	Crystal Rose Gold Pearl	001 ROGL	Crystal Rose Gold*	246	Light Colorado Topaz	539	Tanzanite
001 816	Crystal Coral Pearl	001 SAT	Crystal Satin*	257	Blush Rose	652	Marbled Yellow
001 930	Crystal Iridescent Green Pearl	001 SINI	Crystal Silver Night**	259	Tangerine	653	Marbled Black
001 943	Crystal Iridescent Purple Pearl	001 SSHA	Crystal Silver Shade	263	Light Turquoise	654	Marbled Blue
001 944	Crystal Pastel Rose Pearl	202	Aquamarine	266	Denim Blue	655	Marbled Terracotta
001 945	Crystal Pastel Yellow Pearl	203	Topaz	280	Jet	657	Marbled Light Grey
001 946	Crystal Scarabaeus Green*** Pearl	204	Amethyst	280 HEM	Jet Hematite*		

ALPHABETICAL ORDER

Air Blue Opal (285)	Amethyst (204)	Aquamarine (202)	Black Diamond (215)	Blue Zircon (229)	Blush Rose (257)	Caribbean Blue Opal (394)	Chrysolite (238)	Chrysolite Opal (294)	Crystal (001)	Crystal Antique Pink (001 ANTP)*	Crystal Astral Pink (001 API)	Crystal Aurora Boreale (001 AB)	Crystal Bermuda Blue (001 BBL)**	Crystal Black Pearl (001 298)	Crystal Blue Shade* (001 BLSH)	Crystal Blue Shade* (001 BLSH)	Crystal Bronze Shade* (001 BRSH)*	Crystal Bronze Pearl (001 295)	Crystal Burgundy Pearl (001 301)	Crystal Comet Argent Light (001 CAL)*	Crystal Copper (001 COP)	Crystal Coral Pearl (001 816)	Crystal Dark Lapis Pearl (001 719)	Crystal Gold Pearl (001 296)	Crystal Golden Shadow (001 GSHA)	Crystal Grey Pearl (001 731)	Crystal Iridescent Green (001 IRIG)*	Crystal Iridescent Green Pearl (001 930)	Crystal Iridescent Purple Pearl (001 943)	Crystal Iridescent Red Pearl (001 947)	Crystal Ivory Pearl (001 708)	Crystal Jade Pearl (001 715)	Crystal Lapis Pearl (001 717)	Crystal Lapis Pearl (001 717)	Crystal Lilac Shadow (001 LISH)	Crystal Luminous Green (001 LUMG)*	Crystal Light Grey Pearl (001 616)	Crystal Light Grey Pearl (001 616)	Crystal Metallic Blue* (001 METBL)*	Crystal Metallic Light Gold (001 MLGLD)*	Crystal Metallic Sunshine (001 METSH)*	Crystal Moonlight (001 MOL)	Crystal Mystic Black Pearl (001 335)	Crystal Paradise Shine (001 PARSH)	Crystal Pastel Blue Pearl (001 966)	Crystal Pastel Green Pearl (001 967)	Crystal Pastel Grey Pearl (001 968)	Crystal Pastel Rose Pearl (001 944)	Crystal Pastel Yellow Pearl (001 945)	Crystal Pearlescent White Pearl (001 969)	Crystal Pink Coral Pearl (001 716)	Crystal Platinum Pearl (001 459)	Crystal Red Coral Pearl (001 718)	Crystal Red Magma (001 REDM)*	Crystal Rosaline Pearl (001 294)	Crystal Rose Gold (001 ROGL)*	Crystal Rose Gold Pearl (001 769)	Crystal Rose Peach Pearl (001 674)	Crystal Scarabaeus Green*** Pearl (001 946)	Crystal Satin (001 SAT)*	Crystal Silver Night** (001 SINI)**	Crystal Silver Shade (001 SSHA)	Crystal Turquoise Pearl (001 709)	Crystal Vintage Gold Pearl (001 651)	Crystal White Pearl (001 650)	Cyclamen Opal (398)	Dark Indigo (288)	Denim Blue (266)	Emerald (205)	Erinite (360)	Fern Green (291)	Fuchsia (502)	Garnet (241)	Greige (284)	Hyacinth (236)	Indian Sapphire (217)	Indian Siam (327)	Indicolite (379)	Jet (280)	Jet Hematite (280 HEM)*	Jet Nut (280 NUT)*	Jonquil (213)	Light Amethyst (212)	Light Azore (361)	Light Colorado Topaz (246)	Light Grey Opal (383)	Light Peach (362)	Light Rose (223)	Light Sapphire (211)	Light Siam (227)	Light Smoked Topaz (221)	Light Topaz (226)	Light Turquoise (263)	Marbled Black (653)	Marbled Blue (654)	Marbled Light Grey (657)	Marbled Terracotta (655)	Marbled Yellow (652)	Mocca (286)	Montana (207)	Olivine (228)	Pacific Opal (390)	Peridot (214)	Palace Green Opal (393)	Rosaline (508)	Rose (209)	Ruby (501)	Sapphire (206)	Siam (208)	Silk (391)	Smoked Topaz (220)	Smoky Quartz (225)	Tangerine (259)	Tanzanite (539)	Topaz (203)	Vintage Rose (319)	Violet (371)	White Opal (234)
---------------------	----------------	------------------	---------------------	-------------------	------------------	---------------------------	------------------	-----------------------	---------------	----------------------------------	-------------------------------	---------------------------------	----------------------------------	-------------------------------	--------------------------------	--------------------------------	-----------------------------------	--------------------------------	----------------------------------	---------------------------------------	--------------------------	-------------------------------	------------------------------------	------------------------------	----------------------------------	------------------------------	--------------------------------------	--	---	--	-------------------------------	------------------------------	-------------------------------	-------------------------------	---------------------------------	------------------------------------	------------------------------------	------------------------------------	-------------------------------------	--	--	-----------------------------	--------------------------------------	------------------------------------	-------------------------------------	--------------------------------------	-------------------------------------	-------------------------------------	---------------------------------------	---	------------------------------------	----------------------------------	-----------------------------------	-------------------------------	----------------------------------	-------------------------------	-----------------------------------	------------------------------------	---	--------------------------	-------------------------------------	---------------------------------	-----------------------------------	--------------------------------------	-------------------------------	---------------------	-------------------	------------------	---------------	---------------	------------------	---------------	--------------	--------------	----------------	-----------------------	-------------------	------------------	-----------	-------------------------	--------------------	---------------	----------------------	-------------------	----------------------------	-----------------------	-------------------	------------------	----------------------	------------------	--------------------------	-------------------	-----------------------	---------------------	--------------------	--------------------------	--------------------------	----------------------	-------------	---------------	---------------	--------------------	---------------	-------------------------	----------------	------------	------------	----------------	------------	------------	--------------------	--------------------	-----------------	-----------------	-------------	--------------------	--------------	------------------

For details on available colors and effects for each article within the product groups, please see the product matrix of the respective item in the Collection 2016. For color and effect samples, please see the corresponding color chart.

Classic Colors/Effects:
This color range offers a wide choice of traditional Swarovski crystal colors and effects.

Exclusive Colors/Effects:
This color range is offered exclusively by Swarovski.

The plating resistance of effects is tested according to Swarovski's plating guidelines (SWAROVSKI.COM/PROFESSIONAL). Customers are advised to carry out their own tests if customers' plating parameters diverge from Swarovski plating guidelines.

* Crystals are not resistant to plating and similar processing.
** Crystals are resistant to plating only if they are F-foiled.
*** designed by Jean Paul Gaultier

Colors and effects can appear different when illuminated with different light sources. Swarovski uses standard light source D50 for color decision and comparison. Slight changes in shades are unavoidable. Colors may vary according to cut and foiling.

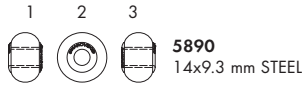
The composition of Advanced Crystal is compliant with regulatory industry norms and laws regarding the restriction or prohibition of certain substances in the most relevant segments of our customers. Please note that the compliance of the crystal colors Citrine, Fireopal, Hyacinth, Light Siam, Siam and Yellow Opal vary to certain industry regulations. Those regulations are indicated with an (*) in the compliance overview. Indian Siam (option to Lt. Siam) and Tangerine (option to Sun) conform to all CLEAR-lists.

For further information please visit swarovski.com/professional

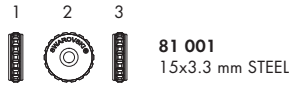
© 2016 D. Swarovski Distribution GmbH

BECHARMED & PAVÉ

SUMMARY



5890
14x9.3 mm STEEL



81 001
15x3.3 mm STEEL



81 785
14x9.3 mm STEEL



5928
14x9.3 mm STEEL



81 101
13.5x6.7 mm STEEL



81 795
14x9.3 mm STEEL



5929
14x6.7 mm STEEL



81 201
13x6.7 mm STEEL



81 805
14x9.3 mm STEEL



5948
14x9.3 mm STEEL



81 304
14x9.3 mm STEEL



81 815
14x9.3 mm STEEL



80 101
14x9.3 mm STEEL



81 403
14x9.3 mm STEEL



81 823
14x9.3 mm STEEL



80 201
15x9.3 mm STEEL



81 504
14x9.3 mm STEEL



81 833
14x9.3 mm STEEL



80 301
10.5x9.3 mm STEEL



81 601
14x9.3 mm STEEL



81 844
14x9.3 mm STEEL



80 401
16x9.3 mm STEEL



81 702
13.5x6.7 mm STEEL



81 852
14x9.3 mm STEEL



80 901
11.5x9.3 mm STEEL



81 712
15x9.3 mm STEEL



81 864
14x9.3 mm STEEL



80 912
11.5x22 mm STEEL



81 722
15.5x9.3 mm STEEL



81 873
14x9.3 mm STEEL



80 921
13x22 mm STEEL



81 732
14.5x9.3 mm STEEL



81 951
14x12.9 mm STEEL



81 000
12x6 mm STEEL



81 773
14x9.3 mm STEEL



81 961
13.5x11.9 mm STEEL

BECHARMED & PAVÉ



81 974
10x22 mm STEEL



81 982
10x22 mm STEEL



82 013
14.5x9.3 mm STEEL



82 023
14.5x9.3 mm STEEL



82 033
14.5x9.3 mm STEEL



82 043
14.5x9.3 mm STEEL



82 053
14x9.3 mm STEEL



82 063
14x9.3 mm STEEL



82 072
13.5x6.7 mm STEEL



84 302
14.5x9.3 mm STEEL



84 501
14x9.3 mm STEEL



86 502
14x14 mm



86 512
14x14 mm



86 522
14x14 mm



86 532
14x14 mm



86 541
16x18 mm



86 553
18x20 mm



86 564
14x8.5 mm



86 574
8.5x14 mm



87 000
8x8 mm



87 001
15x7.5 mm



87 002
12x12 mm



87 003
8x8 mm



87 004
12x11 mm



87 005
14x10 mm



87 006
18x9.5 mm



87 007
13.5x6 mm



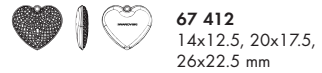
87 008
13x10 mm



87 009
14x14 mm



67 402
20x8, 26x10.5 mm



67 412
14x12.5, 20x17.5,
26x22.5 mm



67 422
14x14, 20x20,
26x26 mm



67 432
14x14, 20x20,
26x26 mm



67 442
14x14, 20x20,
26x26 mm



67 452
20x6, 30x7 mm



67 462
20x6.5, 30x8 mm

BECHARMED & PAVÉ



67 472
20x5, 30x7.5 mm



85 001
14.5x4.5, 16.5x4.5,
18.5x4.5 mm (2 holes)
STEEL



67 482
20x5, 30x7.5 mm



86 001
4, 6, 8, 10 mm



67 492
20x9, 30x12 mm



67 502
20x9, 30x12 mm



67 511
16x16, 22x22 mm



67 523
18x16, 30x25 mm



67 534
14x8.5, 20x12.5 mm



67 544
8.5x14, 12.5x20 mm



77 510
10x3.8 mm



77 512
12x4.5 mm

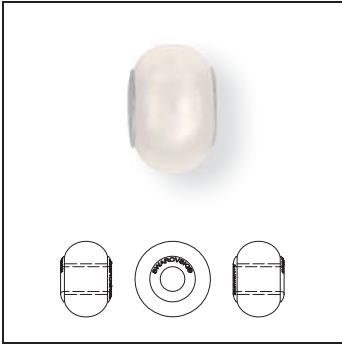


80 000
180, 190, 203 mm



85 001
14.5x4.5, 16.5x4.5,
18.5x4.5 mm (1 hole)
STEEL

5890 Crystal BeCharmed Pearl







Size

14x9.3 mm Stainless Steel

Colors

-  Crystal Black Pearl (001 298)
-  Crystal Bronze Pearl (001 295)
-  Crystal Burgundy Pearl (001 301)
-  Crystal Cream Pearl (001 620)
-  Crystal Creamrose Pearl (001 621)
-  Crystal Gold Pearl (001 296)
-  Crystal Grey Pearl (001 731)
-  Crystal Iridescent Green Pearl (001 930)
-  Crystal Iridescent Purple Pearl (001 943)
-  Crystal Iridescent Red Pearl (001 947)
-  Crystal Lavender Pearl (001 524)
-  Crystal Light Grey Pearl (001 616)
-  Crystal Pearlescent White Pearl (001 969)
-  Crystal Platinum Pearl (001 459)
-  Crystal Rosaline Pearl (001 294)
-  Crystal Rose Gold Pearl (001 769)
-  Crystal Rose Peach Pearl (001 674)
-  Crystal Scarabaeus Green*** Pearl (001 946)
-  Crystal Vintage Gold Pearl (001 651)
-  Crystal White Pearl (001 650)

Gemcolors

-  Crystal Coral Pearl (001 816)
-  Crystal Dark Lapis Pearl (001 719)
-  Crystal Ivory Pearl (001 708)
-  Crystal Jade Pearl (001 715)
-  Crystal Lapis Pearl (001 717)
-  Crystal Mystic Black Pearl (001 335)
-  Crystal Pink Coral Pearl (001 716)
-  Crystal Red Coral Pearl (001 718)
-  Crystal Turquoise Pearl (001 709)

Pastelcolors

-  Crystal Pastel Blue Pearl (001 966)
-  Crystal Pastel Green Pearl (001 967)
-  Crystal Pastel Grey Pearl (001 968)
-  Crystal Pastel Rose Pearl (001 944)
-  Crystal Pastel Yellow Pearl (001 945)

*** designed by Jean Paul Gaultier

5928 BeCharmed Helix Bead



Size
14x9.3 mm Stainless Steel

Crystal

Crystal (001)

Colors

Plain Colors

Amethyst (204)

Aquamarine (202)

Blush Rose (257)

Chrysolite (238)

Denim Blue (266)

Emerald (205)

Fern Green (291)

Fuchsia (502)

Indian Sapphire (217)

Indicolite (379)

Jet (280)

Jonquil (213)

Light Amethyst (212)

Light Rose (223)

Light Sapphire (211)

Light Smoked Topaz (221)

Light Topaz (226)

Montana (207)

Olivine (228)

Peridot (214)

Rose (209)

Sapphire (206)

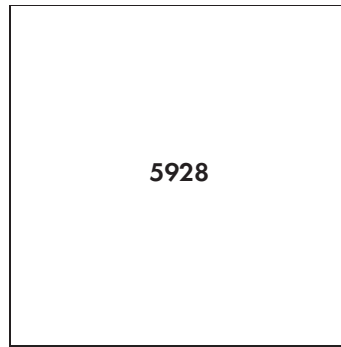
Smoked Topaz (220)

Topaz (203)

Violet (371)

Opal Colors

White Opal (234)



Size
14x9.3 mm Stainless Steel

Crystal Effects

Transparent Effects

Crystal AB (001 AB)

Crystal Astral Pink (001 API)

Crystal Blue Shade (001 BLSH)

Crystal Bronze Shade (001 BRSH)

Crystal Copper (001 COP)

Crystal Golden Shadow (001 GSHA)

Crystal Lilac Shadow (001 LISH)

Crystal Paradise Shine (001 PARSH)

Crystal Red Magma (001 REDM)

Crystal Satin (001 SAT)

Crystal Silver Shade (001 SSHA)

Metallic Effects

Crystal Iridescent Green (001 IRIG)

5929 BeCharmed Fortune Bead



Size

14x6.7 mm Stainless Steel

Crystal

Crystal (001)

Colors

Plain Colors

Amethyst (204)

Aquamarine (202)

Denim Blue (266)

Fuchsia (502)

Jet (280)

Light Rose (223)

Light Smoked Topaz (221)

Light Turquoise (263)

Peridot (214)

Rose (209)

Crystal Effects

Transparent Effects

Crystal AB (001 AB)

Crystal Astral Pink (001 API)

Crystal Blue Shade (001 BLSH)

Crystal Bronze Shade (001 BRSH)

Crystal Golden Shadow (001 GSHA)

Crystal Lilac Shadow (001 LISH)

Crystal Paradise Shine (001 PARSH)

Crystal Satin (001 SAT)

Crystal Silver Shade (001 SSHA)

Metallic Effects

Crystal Iridescent Green (001 IRIG)

5948 BeCharmed Briolette Bead



Size
14x9.3 mm Stainless Steel

Crystal

Crystal (001)

Colors

Plain Colors

Amethyst (204)

Aquamarine (202)

Blush Rose (257)

Chrysolite (238)

Denim Blue (266)

Emerald (205)

Fern Green (291)

Fuchsia (502)

Indian Sapphire (217)

Indicolite (379)

Jet (280)

Jonquil (213)

Light Amethyst (212)

Light Rose (223)

Light Sapphire (211)

Light Smoked Topaz (221)

Light Topaz (226)

Mocca (286)

Montana (207)

Olivine (228)

Peridot (214)

Rosaline (508)

Rose (209)

Sapphire (206)

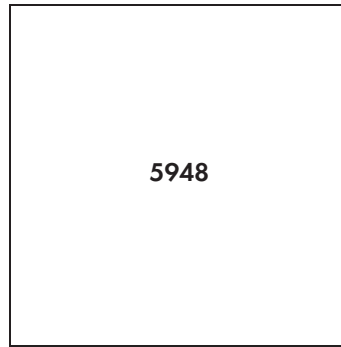
Smoked Topaz (220)

Topaz (203)

Violet (371)

Opal Colors

White Opal (234)



Size
14x9.3 mm Stainless Steel

Crystal Effects

Transparent Effects

Crystal AB (001 AB)

Crystal Astral Pink (001 API)

Crystal Blue Shade (001 BLSH)

Crystal Bronze Shade (001 BRSH)

Crystal Copper (001 COP)

Crystal Golden Shadow (001 GSHA)

Crystal Lilac Shadow (001 LISH)

Crystal Paradise Shine (001 PARSH)

Crystal Red Magma (001 REDM)

Crystal Satin (001 SAT)

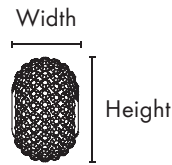
Crystal Silver Shade (001 SSHA)

Metallic Effects

Crystal Iridescent Green (001 IRIG)

ARTICLE EXPLANATION

80 101 BeCharmed Pavé Bead



S	14x9.3 mm
M	12 PCS

200%

80 101	S	M	200 %
Article number	Size Height x Width	Minimum order quantity in pieces (PCS)	% of actual size

EXPLANATION OF COLOR COMBINATIONS

All specified color combinations are preset in terms of
 – Color of crystal
 – Color of Ceralun
 and are not modifiable.

For ordering BeCharmed Pavé please follow the example ordering system below.

ORDERING EXAMPLE
& PRODUCT VARIETY EXPLANATION

1	80 101	01	001
Metal Core	Article number	Color of Ceralun	Color of crystal
1 Stainless Steel		Please see the respective product matrix for all available reference codes.	Please see the respective product matrix for all available reference codes.

80 101 BeCharmed Pavé Bead



Size
14x9,3 mm Stainless Steel

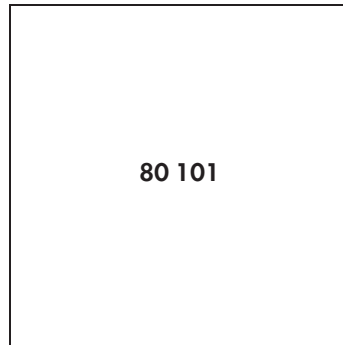
Crystal

- Crystal (001)
- White (01)

Colors

Plain Colors

- Amethyst (204)
- Dark Lila (09)
- Aquamarine (202)
- Shining Blue (37)
- Black Diamond (215)
- Silver (03)
- Emerald (205)
- Dark Green (13)
- Indian Siam (327)
- Shining Red (07)
- Jet (280)
- Black (02)
- Jonquil (213)
- Gold (04)
- Light Amethyst (212)
- Mauve (14)
- Light Rose (223)
- Rose (06)
- Light Sapphire (211)
- Sky Blue (18)
- Montana (207)
- Navy Blue (17)
- Peridot (214)
- Light Green (10)
- Rose (209)
- Rose (06)
- Sapphire (206)
- Dark Blue (15)
- Siam (208)
- Dark Red (16)
- Tanzanite (539)
- Purple (08)



Size
14x9,3 mm Stainless Steel

Crystal Effects

Transparent Effects

- Crystal AB (001 AB)
- White (01)
- Crystal Astral Pink (001 API)
- Shining Curry (12)
- Crystal Golden Shadow (001 GSHA)
- Pearl Silk (05)
- Crystal Lilac Shadow (001 LISH)
- Burgundy (29)
- Crystal Luminous Green (001 LUMG)
- Pearl Silk (05)
- Crystal Silver Night (001 SINI)
- Black (02)

Color Effects

Metallic Effects

- Jet Hematite (280 HEM)
- Black (02)

80 201 BeCharmed Pavé Bead



Size
15x9,3 mm Stainless Steel

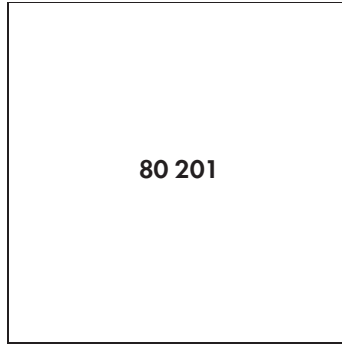
Crystal

- Crystal (001)
- White (01)

Colors

Plain Colors

- Amethyst (204)
- Dark Lila (09)
- Aquamarine (202)
- Shining Blue (37)
- Black Diamond (215)
- Silver (03)
- Emerald (205)
- Dark Green (13)
- Jet (280)
- Black (02)
- Light Amethyst (212)
- Mauve (14)
- Light Rose (223)
- Rose (06)
- Light Sapphire (211)
- Sky Blue (18)
- Light Siam (227)
- Red (21)
- Montana (207)
- Navy Blue (17)
- Peridot (214)
- Light Green (10)
- Rose (209)
- Rose (06)
- Sapphire (206)
- Dark Blue (15)
- Siam (208)
- Dark Red (16)
- Tanzanite (539)
- Purple (08)



Size
15x9,3 mm Stainless Steel

Crystal Effects

Transparent Effects

- Crystal AB (001 AB)
- White (01)
- Crystal Golden Shadow (001 GSHA)
- Pearl Silk (05)
- Crystal Lilac Shadow (001 LISH)
- Burgundy (29)
- Crystal Luminous Green (001 LUMG)
- Pearl Silk (05)
- Crystal Silver Night (001 SINI)
- Black (02)

Color Effects

Metallic Effects

- Jet Hematite (280 HEM)
- Black (02)

BECHARMED & PAVÉ

80 301 BeCharmed Pavé Bead



Size
10.5x9.3 mm Stainless Steel

Crystal

- Crystal (001)
- White (01)

Colors

Plain Colors

- Amethyst (204)
- Dark Lila (09)

- Aquamarine (202)
- Shining Blue (37)

- Black Diamond (215)
- Silver (03)

- Emerald (205)
- Dark Green (13)

- Jet (280)
- Black (02)

- Light Amethyst (212)
- Mauve (14)

- Light Rose (223)
- Rose (06)

- Light Sapphire (211)
- Sky Blue (18)

- Montana (207)
- Navy Blue (17)

- Peridot (214)
- Light Green (10)

- Rose (209)
- Rose (06)

- Sapphire (206)
- Dark Blue (15)

- Siam (208)
- Dark Red (16)

- Tanzanite (539)
- Purple (08)

Crystal Effects

Transparent Effects

- Crystal AB (001 AB)
- White (01)

- Crystal Golden Shadow (001 GSHA)
- Pearl Silk (05)

BECHARMED PAVÉ BEADS

80 401 BeCharmed Pavé Bead Spikes



Size
16x9.3 mm Stainless Steel

Colors

Plain Colors

- Jet (280)
- Black (02)

Crystal Effects

Transparent Effects

- Crystal AB (001 AB)
- White (01)

- Crystal Bermuda Blue (001 BBL)
- Dark Blue (15)

- Crystal Golden Shadow (001 GSHA)
- Pearl Silk (05)

- Crystal Red Magma (001 REDM)
- Red (21)

- Crystal Silver Shade (001 SSHA)
- Grey (19)

Metallic Effects

- Crystal Comet Argent Light V (001 CALV)
- Silver (03)

- Crystal Metallic Light Gold (001 MGLD)
- Metallic Gold (20)

BECHARMED & PAVÉ

80 901 BeCharmed Pavé Bead Spikes

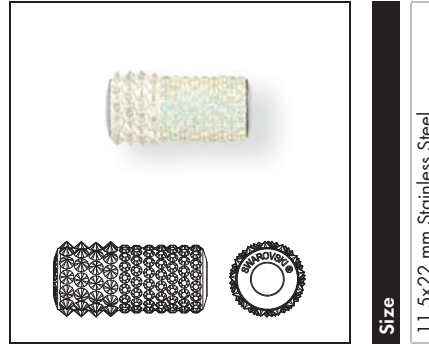


Size
11.5x9.3 mm Stainless Steel

- Color**
- Plain Color**
- Jet (280)
 - Black (02)
- Crystal Effects**
- Transparent Effects**
- Crystal AB (001 AB)
 - White (01)
 - Crystal Bermuda Blue (001 BBL)
 - Dark Blue (15)
 - Crystal Golden Shadow (001 GSHA)
 - Pearl Silk (05)
 - Crystal Red Magma (001 REDM)
 - Red (21)
 - Crystal Silver Shade (001 SSHA)
 - Grey (19)
- Metallic Effects**
- Crystal Comet Argent Light V (001 CALV)
 - Silver (03)
 - Crystal Metallic Light Gold (001 MLGLD)
 - Metallic Gold (20)

BECHARMED PAVÉ BEADS

80 912 BeCharmed Pavé Column Bead Spikes



Size
11.5x22 mm Stainless Steel

- Colors**
- Crystal Golden Shadow (001 GSHA)
 - Crystal Metallic Light Gold (001 MLGLD)
 - Pearl Silk (05)
 - Crystal Silver Night (001 SINI)
 - Jet (280)
 - Black (02)
 - White Opal (234)
 - Crystal Moonlight (001 MOL)
 - White (01)
 - Crystal Silver Shade (001 SSHA)
 - Crystal Chrom (001 CHRM)
 - Silver (03)

80 921 BeCharmed Pavé Column Bead



Size
13x22 mm Stainless Steel

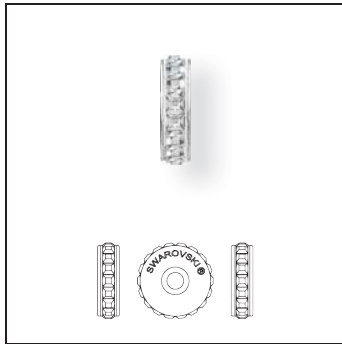
- Colors**
- Vintage Rose (319)
 - Vintage Rose (47)
 - Crystal Golden Shadow (001 GSHA)
 - Pearl Silk (05)
 - Crystal Moonlight (001 MOL)
 - White (01)
 - Crystal Silver Night (001 SINI)
 - Black (02)

81 000 BeCharmed Stopper



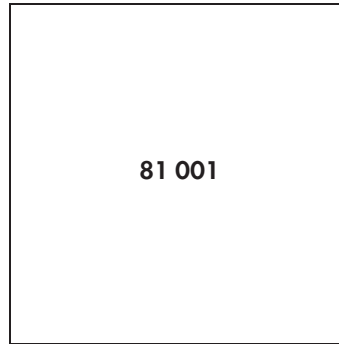
Size
12x6 mm Stainless Steel

81 001 BeCharmed Pavé Stopper



Size
15x3.3 mm Stainless Steel

- Crystal**
- Crystal (001)
 - White (01)
- Colors**
- Plain Colors**
- Amethyst (204)
 - Dark Lila (09)
 - Aquamarine (202)
 - Light Blue (11)
 - Black Diamond (215)
 - Silver (03)
 - Emerald (205)
 - Dark Green (13)
 - Jet (280)
 - Black (02)
 - Light Amethyst (212)
 - Mauve (14)
 - Light Rose (223)
 - Rose (06)
 - Light Sapphire (211)
 - Sky Blue (18)
 - Light Siam (227)
 - Red (21)
 - Montana (207)
 - Navy Blue (17)
 - Peridot (214)
 - Light Green (10)



Size
15x3.3 mm Stainless Steel

- Rose (209)
 - Rose (06)
 - Sapphire (206)
 - Dark Blue (15)
 - Siam (208)
 - Dark Red (16)
 - Tanzanite (539)
 - Purple (08)
- Crystal Effects**
- Transparent Effects**
- Crystal AB (001 AB)
 - White (01)
 - Crystal Golden Shadow (001 GSHA)
 - Pearl Silk (05)
 - Crystal Lilac Shadow (001 LISH)
 - Burgundy (29)
 - Crystal Luminous Green (001 LUMG)
 - Pearl Silk (05)
 - Crystal Silver Night (001 SINI)
 - Black (02)
- Color Effects**
- Metallic Effects**
- Jet Hematite (280 HEM)
 - Black (02)

81 101 BeCharmed Pavé Bead Slim



Size

13.5x6.7 mm Stainless Steel

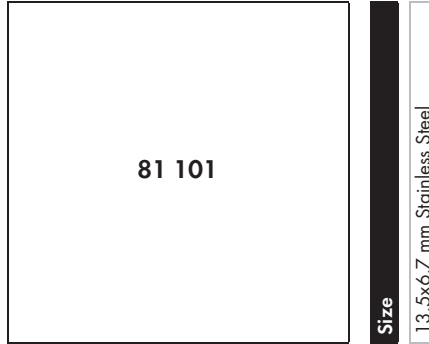
Crystal

- Crystal (001)
- White (01)

Colors

Plain Colors

- Amethyst (204)
- Dark Lila (09)
- Aquamarine (202)
- Shining Blue (37)
- Black Diamond (215)
- Silver (03)
- Emerald (205)
- Dark Green (13)
- Indian Siam (327)
- Shining Red (07)
- Jet (280)
- Black (02)
- Jonquil (213)
- Gold (04)
- Light Amethyst (212)
- Mauve (14)
- Light Rose (223)
- Rose (06)
- Light Sapphire (211)
- Sky Blue (18)
- Montana (207)
- Navy Blue (17)
- Peridot (214)
- Light Green (10)
- Rose (209)
- Rose (06)
- Sapphire (206)
- Dark Blue (15)
- Siam (208)
- Dark Red (16)
- Tanzanite (539)
- Purple (08)



Size

13.5x6.7 mm Stainless Steel

Crystal Effects

Transparent Effects

- Crystal AB (001 AB)
- White (01)
- Crystal Astral Pink (001 API)
- Shining Curry (12)
- Crystal Golden Shadow (001 GSHA)
- Pearl Silk (05)
- Crystal Lilac Shadow (001 LISH)
- Burgundy (29)
- Crystal Luminous Green (001 LUMG)
- Pearl Silk (05)
- Crystal Silver Night (001 SINI)
- Black (02)

Color Effects

Metallic Effects

- Jet Hematite (280 HEM)
- Black (02)

81 201 BeCharmed Pavé Bead Slim



Size
13x6.7 mm Stainless Steel

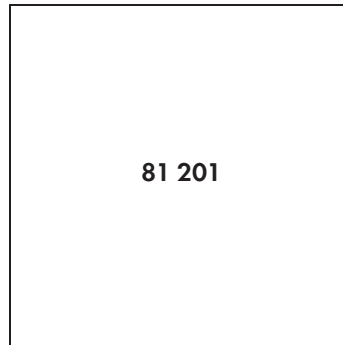
Crystal

- Crystal (001)
- White (01)

Colors

Plain Colors

- Amethyst (204)
- Dark Lila (09)
- Aquamarine (202)
- Shining Blue (37)
- Black Diamond (215)
- Silver (03)
- Emerald (205)
- Dark Green (13)
- Jet (280)
- Black (02)
- Light Amethyst (212)
- Mauve (14)
- Light Rose (223)
- Rose (06)
- Light Sapphire (211)
- Sky Blue (18)
- Light Siam (227)
- Red (21)
- Montana (207)
- Navy Blue (17)
- Peridot (214)
- Light Green (10)
- Rose (209)
- Rose (06)
- Sapphire (206)
- Dark Blue (15)
- Siam (208)
- Dark Red (16)
- Tanzanite (539)
- Purple (08)



Size
13x6.7 mm Stainless Steel

Crystal Effects

Transparent Effects

- Crystal AB (001 AB)
- White (01)
- Crystal Golden Shadow (001 GSHA)
- Pearl Silk (05)
- Crystal Lilac Shadow (001 LISH)
- Burgundy (29)
- Crystal Luminous Green (001 LUMG)
- Pearl Silk (05)
- Crystal Silver Night (001 SINI)
- Black (02)

Color Effects

Metallic Effects

- Jet Hematite (280 HEM)
- Black (02)

BECHARMED & PAVÉ

81 304 BeCharmed Pavé Medley Bead



Size

14x9.3 mm Stainless Steel

Colors

- Rose (209)
 - Siam (208)
 - Jonquil (213)
 - Tangerine (259)
 - Shining Curry (12)
-
- Aquamarine (202)
 - Sapphire (206)
 - Carribean Blue Opal (394)
 - Crystal Metallic Blue (001 METBL)
 - Shining Blue (37)
-
- Black Diamond (215)
 - Jet Hematite (280 HEM)
 - Crystal Silver Shade (001 SSHA)
 - Greige (284)
 - Grey (19)
-
- Crystal Golden Shadow (001 GSHA)
 - Rose (209)
 - Ruby (501)
 - Crystal Antique Pink (001 ANTP)
 - Burgundy (29)
-
- Topaz (203)
 - Smoked Topaz (220)
 - Light Peach (362)
 - Light Grey Opal (383)
 - Shining Curry (12)
-
- Emerald (205)
 - Chrysolite Opal (294)
 - Light Peach (362)
 - Erinite (360)
 - Pearl Jade (40)

BECHARMED PAVÉ BEADS

81 403 BeCharmed Pavé Medley Bead



Size

14x9.3 mm Stainless Steel

Colors

- Amethyst (204)
 - Aquamarine (202)
 - Air Blue Opal (285)
 - Turquoise (38)
-
- Smoked Topaz (220)
 - Light Topaz (226)
 - Crystal Bronze Shade (001 BRSH)
 - Antique Gold (35)
-
- Light Amethyst (212)
 - Air Blue Opal (285)
 - Dark Indigo (288)
 - Dark Blue (15)
-
- Light Siam (227)
 - Hyacinth (236)
 - Light Topaz (226)
 - Shining Red 2 (52)
-
- Tangerine (259)
 - Light Siam (227)
 - Vintage Rose (319)
 - Shining Curry (12)
-
- Sapphire (206)
 - Pacific Opal (390)
 - Peridot (214)
 - Pearl Jade (40)

81 504 BeCharmed Pavé Medley Bead



Size
14x9.3 mm Stainless Steel

Colors

- Crystal Silver Night (001 SINI)
- Jet Hematite (280 HEM)
- Jet Nut (280 NUT)
- Jet (280)
- Black (02)

- Crystal Bermuda Blue (001 BBL)
- Dark Indigo (288)
- Cyclamen Opal (398)
- Amethyst (204)
- Shining Lilac (41)

- Crystal Golden Shadow (001 GSHA)
- Light Grey Opal (383)
- Light Smoked Topaz (221)
- Silk (391)
- Shining Curry (12)

- Crystal Metallic Blue (001 METBL)
- Denim Blue (266)
- Air Blue Opal (285)
- Crystal Blue Shade (001 BLSH)
- Cadetblue (43)

- Crystal Rose Gold (001 ROGL)
- Light Peach (362)
- Light Siam (227)
- Siam (208)
- Vermilion (39)

- Crystal Metallic Light Gold (001 MLG)
- Fern Green (291)
- Erinite (360)
- Palace Green Opal F (393)
- Shining Green (31)

BECHARMED & PAVÉ

81 601 BeCharmed Pavé Bow Bead



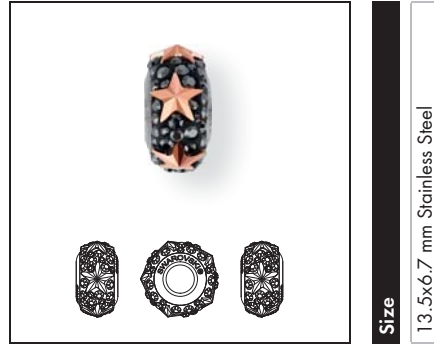
Size
14x9.3 mm Stainless Steel

Colors

- Light Siam (227)
- White Opal (234)
- Finest White (01)
- Ruby (501)
- Crystal AB (001 AB)
- Finest White (01)
- Siam (208)
- Crystal Golden Shadow (001 GSHA)
- Pearl Silk (05)
- Garnet (241)
- Vintage Rose (319)
- Vintage Rose (47)

BECHARMED PAVÉ BEADS

81 702 BeCharmed Pavé Star Bead Slim

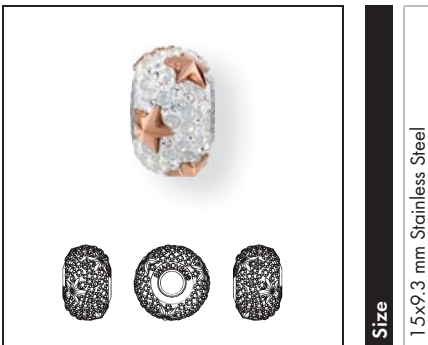


Size
13.5x6.7 mm Stainless Steel

Colors

- Crystal Rose Gold (001 ROGL)
- Jet Hematite (280 HEM)
- Black (02)
- Crystal AB (001 AB)
- Light Siam (227)
- Red (21)
- Crystal AB (001 AB)
- Crystal Golden Shadow (001 GSHA)
- Pearl Silk (05)
- Jet Hematite (280 HEM)
- Emerald (205)
- Shining Green (31)

81 712 BeCharmed Pavé Star Bead

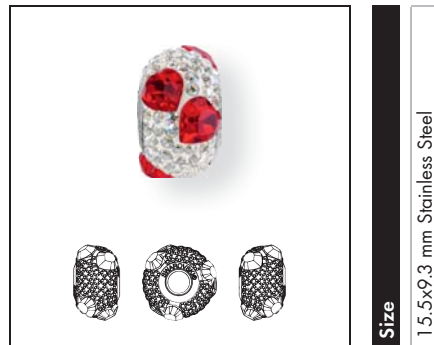


Size
15x9.3 mm Stainless Steel

Colors

- Crystal Silver Shade (001 SSHA)
- Greige (284)
- Silver (03)
- Crystal AB (001 AB)
- Jonquil (213)
- Shining Yellow (44)
- Crystal Rose Gold (001 ROGL)
- White Opal (234)
- White (01)
- Jet Hematite (280 HEM)
- Crystal Golden Shadow (001 GSHA)
- Pearl Silk (05)

81 722 BeCharmed Pavé Heart Bead



Size
15.5x9.3 mm Stainless Steel

Colors

- Crystal Antique Pink (001 ANTP)
- Crystal Silver Shade (001 SSHA)
- White (01)
- Crystal Antique Pink (001 ANTP)
- Fuchsia (502)
- Pearl Raspberry (42)
- Crystal Golden Shadow (001 GSHA)
- Jet Hematite (280 HEM)
- Black (02)
- Light Siam (227)
- Crystal Moonlight (001 MOL)
- White (01)

BECHARMED & PAVÉ

81 732 BeCharmed Pavé Love Bead



Size
14.5x9.3 mm Stainless Steel

Colors

- Light Siam (227)
- White Opal (234)
- White (01)
- Hyacinth (236)
- Crystal Moonlight (001 MOL)
- White (01)
- Ruby (501)
- Crystal Moonlight (001 MOL)
- White (01)
- Rose (209)
- Crystal Moonlight (001 MOL)
- White (01)

BECHARMED PAVÉ BEADS

84 302 BeCharmed Pavé Pink Ribbon



Size
14.5x9.3 mm Stainless Steel

Colors

- White Opal (234)
- Rose (209)
- White (01)

BECHARMED & PAVÉ

BECHARMED PAVÉ FLAG BEADS

81 773 BeCharmed Pavé Flag "Austria"



Size

14x9.3 mm Stainless Steel

Colors

- Light Siam (227)
- Siam (208)
- White Opal (234)
- Indian Red (48)
- White (01)

BECHARMED PAVÉ BEADS

81 785 BeCharmed Pavé Flag "France"



Size

14x9.3 mm Stainless Steel

Colors

- Light Siam (227)
- Sapphire (206)
- Siam (208)
- Crystal Metallic Blue (001 METBL)
- White Opal (234)
- White (01)
- Sapphire (33)
- Indian Red (48)

81 795 BeCharmed Pavé Flag "Germany"



Size

14x9.3 mm Stainless Steel

Colors

- Jet (280)
- Light Siam (227)
- Siam (208)
- Jet Hematite (280 HEM)
- Light Topaz (226)
- Black (02)
- Shining Gold (25)
- Indian Red (48)

81 805 BeCharmed Pavé Flag "Ireland"



Size

14x9.3 mm Stainless Steel

Colors

- Topaz (203)
- Erinite (360)
- White Opal (234)
- Fern Green (291)
- Tangerine (259)
- White (01)
- Shining Curry (12)
- Shining Green (31)

81 815 BeCharmed Pavé Flag "Italy"



Size

1.4x9.3 mm Stainless Steel

Colors

- Light Siam (227)
- Siam (208)
- White Opal (234)
- Erenite (360)
- Fern Green (291)
- White (01)
- Indian Red (48)
- Shining Green (31)

81 823 BeCharmed Pavé Flag "Spain"



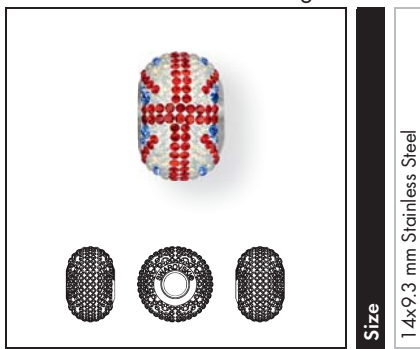
Size

1.4x9.3 mm Stainless Steel

Colors

- Light Siam (227)
- Siam (208)
- Light Topaz (226)
- Indian Red (48)
- Shining Gold (25)

81 833 BeCharmed Pavé Flag "UK"



Size

1.4x9.3 mm Stainless Steel

Colors

- Sapphire (206)
- Light Siam (227)
- White Opal (234)
- White (01)

81 844 BeCharmed Pavé Flag "Brazil"



Size

1.4x9.3 mm Stainless Steel

Colors

- Sapphire (206)
- Fern Green (291)
- Light Topaz (226)
- Jonquil (213)
- Shining Gold (25)
- Sapphire (33)
- Shining Green (31)

BECHARMED & PAVÉ

81 852 BeCharmed Pavé Flag "Canada"



Size

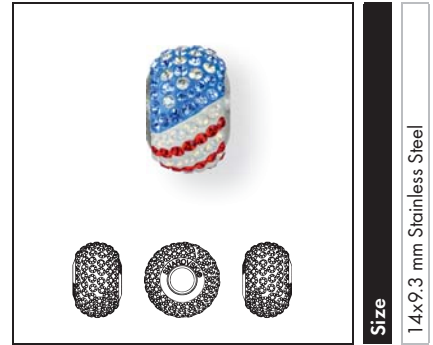
14x9.3 mm Stainless Steel

Colors

- Light Siam (227)
- White Opal (234)
- White (01)

BECHARMED PAVÉ BEADS

81 864 BeCharmed Pavé Flag "USA"



Size

14x9.3 mm Stainless Steel

Colors

- Sapphire (206)
- Light Siam (227)
- White Opal (234)
- Crystal Moonlight (001 MOL)
- White (01)
- Sapphire (33)

81 873 BeCharmed Pavé Flag "Japan"



Size

14x9.3 mm Stainless Steel

Colors

- Light Siam (227)
- White Opal (234)
- Crystal Moonlight (001 MOL)
- White (01)
- Red (21)

BECHARMED & PAVÉ

BECHARMED PAVÉ ANIMAL PATTERN COLUMN BEADS

81 974 BeCharmed Pavé Leopard Bead



Size

10x22 mm Stainless Steel

Colors

- Jet (280)
 - Light Colorado Topaz (246)
 - Light Smoked Topaz (221)
 - Crystal Golden Shadow (001 GSHA)
 - Pearl Silk (05)
-
- Black Diamond (215)
 - Crystal Silver Shade (001 SSHA)
 - White Opal (234)
 - Jet Hematite (280 HEM)
 - White (01)

81 982 BeCharmed Pavé Zebra Bead



Size

10x22 mm Stainless Steel

Colors

- Jet (280)
 - White Opal (234)
 - White (01)
-
- Jet (280)
 - Crystal Golden Shadow (001 GSHA)
 - Pearl Silk (05)

BECHARMED & PAVÉ

BECHARMED PAVÉ 4 ELEMENTS BEADS

82 013 BeCharmed Pavé Earth Bead



Size

14.5x9.3 mm Stainless Steel

Colors

- Topaz (203)
- Light Colorado Topaz (246)
- Smoky Quartz (225)
- Copper (26)

BECHARMED PAVÉ BEADS

82 023 BeCharmed Pavé Air Bead



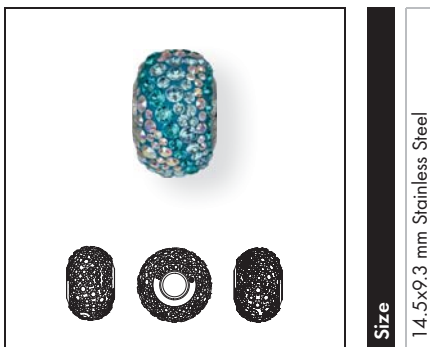
Size

14.5x9.3 mm Stainless Steel

Colors

- Crystal Silver Night (001 SINI)
- Light Sapphire (211)
- Crystal Silver Shade (001 SSHA)
- White (01)

82 033 BeCharmed Pavé Water Bead



Size

14.5x9.3 mm Stainless Steel

Colors

- Blue Zircon (229)
- Aquamarine (202)
- Crystal AB (001 AB)
- Indicolite (50)

82 043 BeCharmed Pavé Fire Bead



Size

14.5x9.3 mm Stainless Steel

Colors

- Topaz (203)
- Light Siam (227)
- Jonquil (213)
- Shining Gold (25)

BECHARMED & PAVÉ

BECHARMED & PAVÉ CHRISTMAS COLLECTION

82 053 BeCharmed Pavé Christmas Bead



Size

1.4x9.3 mm Stainless Steel

Colors

- Siam (208)
 - Crystal (001)
 - Crystal Metallic Light Gold (001 MLGLD)
 - Indian Red (48)
-
- Crystal (001)
 - Siam (208)
 - Emerald (205)
 - Silver (03)

82 063 BeCharmed Pavé Snowflake Bead



Size

1.4x9.3 mm Stainless Steel

Colors

- White Opal (234)
 - Crystal (001)
 - Light Sapphire (211)
 - White (01)
-
- Montana (207)
 - Crystal (001)
 - Light Sapphire (211)
 - Montana Blue (59)
-
- Montana (207)
 - Crystal Golden Shadow (001 GSHA)
 - Pearl Silk (05)
-
- Siam (208)
 - Crystal Golden Shadow (001 GSHA)
 - Indian Red (48)

82 072 BeCharmed Pavé Noel Bead



Size

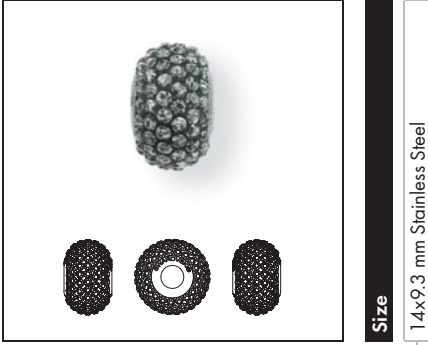
13.5x6.7 mm Stainless Steel

Colors

- Emerald (205)
 - Light Siam (227)
 - Dark Green (13)
-
- Siam (208)
 - Crystal Golden Shadow (001 GSHA)
 - Indian Red (48)

BECHARMED & PAVÉ

84 501 BeCharmed Pavé Ceramics Bead



Size

14x9.3 mm Stainless Steel

Colors

- Marbled Black (653)**
- Shining Black (36)**
- Marbled Blue (654)**
- Sapphire (33)**
- Marbled Light Grey (657)**
- Silver (03)**
- Marbled Terracotta (655)**
- Antique Gold (35)**
- Marbled Yellow (652)**
- Olive (34)**

AVAILABLE CERAMIC COLORS



Marbled Black (653)



Marbled Blue (654)



Marbled Light Grey (657)



Marbled Terracotta (655)



Marbled Yellow (652)

BECHARMED METALBEADS

81 951 BeCharmed Heart Bead



Size
1.4x1.2.9 mm Stainless Steel

Colors

Plain Colors

Denim Blue (266)

Light Siam (227)

Rosaline (508)

Crystal Effects

Transparent Effects

Crystal AB (001 AB)

Crystal Golden Shadow (001 GSHA)

81 961 BeCharmed Edelweiss Bead



Size
1.3.5x1.1.9 mm Stainless Steel

Colors

Plain Colors

Vintage Rose F (319)

Crystal Effects

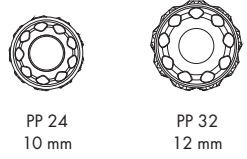
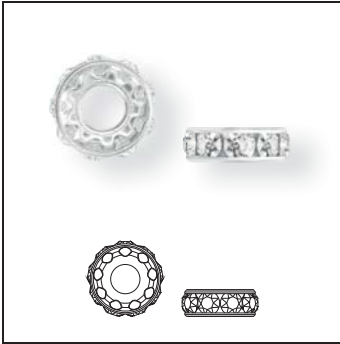
Transparent Effects

Crystal AB F (001 AB)

Crystal Golden Shadow F (001 GSHA)

Crystal Silver Night (001 SINI)

77 510 & 77 512 BeCharmed Rondelle



Base Item No.	Stone Size		Ring Configuration		Back Configuration		Stone Art.No.
	Code	Description	Code	Description	Code	Description	
77 510	P24	PP 24	00	None	H	Hole	1088
77 512	P32	PP 32	00	None	H	None	

AVAILABLE COLOR OF CRYSTALS

Please see the respective product matrix for 1088 XIRIUS Chaton on page 74-79 for all available colors and effects.¹

Stock Program

77 510

Size

P24

Color/Plating

Crystal F (001) /Z

Stock Program

77 512

Size

P32

Color/Plating

Crystal F (001) /Z

Crystal F (001) /H

¹ The plating resistance of effects should be considered and can be verified with the Color Chart on page 704

ARTICLE EXPLANATION

80 000 BeCharmed Bracelet



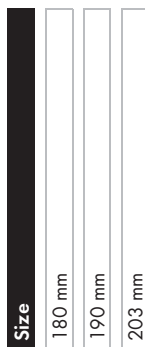
S	180 mm	
M	6 PCS	66%

80 000	S	M	66%
Article number	Size	Minimum order quantity in pieces (PCS)	% of actual size

ORDERING EXAMPLE
& PRODUCT VARIETY EXPLANATION

1	80 000	180 mm	H
Metal Type	Article number	Size	Color of plating
1 Brass		Size of Bracelet (Length)	H Rhodium ¹

80 000 BeCharmed Bracelet



Color of Casing
H Rhodium Plating ¹

¹ Anti nickel allergenic

ARTICLE EXPLANATION

85 001 Pavé Thread Ring



S	16.5x4.5 mm	
M	6 PCS	100%

04 BECHARMED & PAVÉ

85 001	S	M	100%
Article number	Size	Minimum Order Quantity in pieces (PCS)	% of actual size

EXPLANATION OF COLOR COMBINATIONS

All specified color combinations are preset in terms of
 – Color of crystal
 – Color of Ceralun
 and are not modifiable.

ORDERING EXAMPLE
 & PRODUCT VARIETY EXPLANATION

1	85 001	16.5x4.5 mm	01	001	1
Metal Core	Article number	Inner Diameter	Color of Ceralun	Color of crystals	Hole configuration
1 Stainless Steel		14.5x4.5 mm 16.5x4.5 mm 18.5x4.5 mm	Please see the respective product matrix for all available reference codes.	Please see the respective product matrix for all available reference codes.	1 1 Hole 2 2 Holes

NEW PAVÉ THREAD RING HOLE CONFIGURATIONS

85 001 Pavé Thread Ring



Hole Configuration 1 (1 hole)

S	16.5x4.5 mm	
M	6 PCS	100%

85 001 Pavé Thread Ring



Hole Configuration 2 (2 holes)

S	16.5x4.5 mm	
M	6 PCS	100%

85 001 Pavé Thread Ring



Hole Configuration

1 (with 1 hole)

2 (with 2 holes)

Crystal

- Crystal (001)
- White (01)

Colors

Plain Colors

- Amethyst (204)
- Dark Lila (09)

- Aquamarine (202)
- Light Blue (11)

- Black Diamond (215)
- Silver (03)

- Emerald (205)
- Dark Green (13)

- Jet (280)
- Black (02)

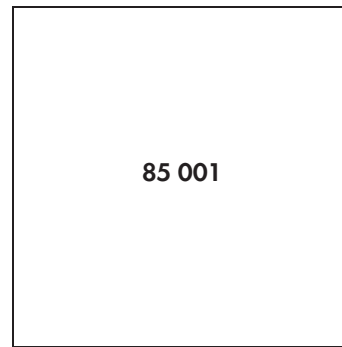
- Jonquil (213)
- Gold (04)

- Light Amethyst (212)
- Mauve (14)

- Light Rose (223)
- Rose (06)

- Light Sapphire (211)
- Sky Blue (18)

Size	14.5x4.5 mm Stainless Steel	16.5x4.5 mm Stainless Steel	18.5x4.5 mm Stainless Steel
------	-----------------------------	-----------------------------	-----------------------------



Size	14.5x4.5 mm Stainless Steel	16.5x4.5 mm Stainless Steel	18.5x4.5 mm Stainless Steel
------	-----------------------------	-----------------------------	-----------------------------

- Montana (207)
- Navy Blue (17)

- Peridot (214)
- Light Green (10)

- Rose (209)
- Pearl Raspberry (42)

- Sapphire (206)
- Dark Blue (15)

- Siam (208)
- Dark Red (16)

- Tanzanite (539)
- Purple (08)

Crystal Effects

Transparent Effects

- Crystal AB (001 AB)
- White (01)

- Crystal Golden Shadow (001 GSHA)
- Pearl Silk (05)

- Crystal Lilac Shadow F (001 LISH)
- Burgundy (29)

Color Effects

Metallic Effects

- Jet Hematite (280 HEM)
- Black (02)

ARTICLE EXPLANATION

86 001 Pavé Ball



S	8 mm	
M	12 PCS	100%

86 001	S	M	100 %
Article number	Size	Minimum order quantity in pieces (PCS)	% of actual size

EXPLANATION OF COLOR COMBINATIONS

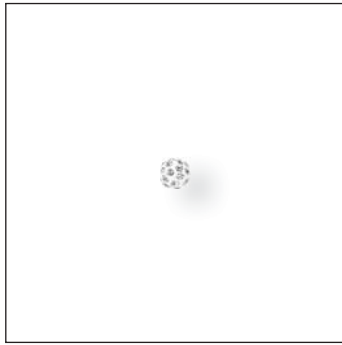
All specified color combinations are preset in terms of
 – Color of crystal
 – Color of Ceralun
 and are not modifiable.

ORDERING EXAMPLE
 & PRODUCT VARIETY EXPLANATION

86 001	8 mm	01	001
Article number	Size	Color of Ceralun	Color of crystal
	4 mm 6 mm 8 mm 10 mm	Please see the respective product matrix for all available reference codes.	Please see the respective product matrix for all available reference codes.

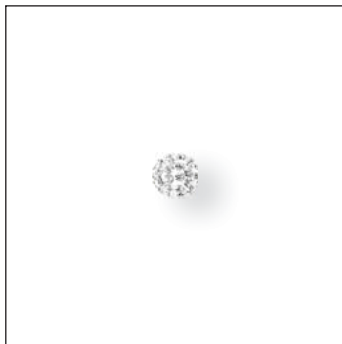
PAVÉ BALL

86 001



S 4 mm
M 12 PCS 100%

86 001



S 6 mm
M 12 PCS 100%

86 001



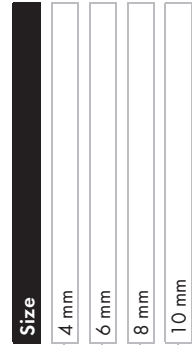
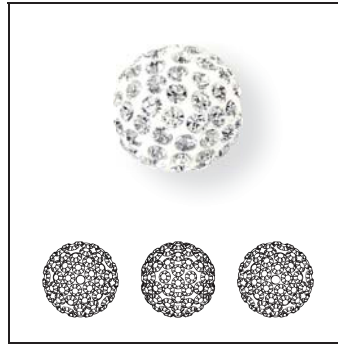
S 8 mm
M 12 PCS 100%

86 001



S 10 mm
M 12 PCS 100%

86 001 Pavé Ball



Crystal

- Crystal (001)
- White (01)

Colors

Plain Colors

- Amethyst (204)
- Dark Lila (09)
- Aquamarine (202)
- Light Blue (11)
- Black Diamond (215)
- Silver (03)
- Emerald (205)
- Dark Green (13)
- Jet (280)
- Black (02)
- Jonquil (213)
- Gold (04)
- Light Amethyst (212)
- Mauve (14)
- Light Rose (223)
- Rose (06)
- Light Sapphire (211)
- Sky Blue (18)
- Montana (207)
- Navy Blue (17)
- Peridot (214)
- Light Green (10)
- Rose (209)
- Pearl Raspberry (42)
- Sapphire (206)
- Dark Blue (15)
- Siam (208)
- Dark Red (16)
- Tanzanite (539)
- Purple (08)

Crystal Effects

Transparent Effects

- Crystal AB (001 AB)
- White (01)
- Crystal Golden Shadow (001 GSHA)
- Pearl Silk (05)

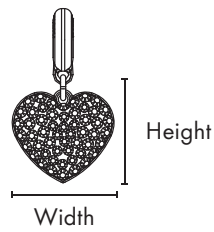
Color Effects

Metallic Effects

- Jet Hematite (280 HEM)
- Black (02)

ARTICLE EXPLANATION

86 502 BeCharmed Pavé Heart Charm



S	14x14 mm
M	12 PCS 100%

86 502	S	M	100%
Article number	Height x Width h x w	Minimum Order Quantity in pieces (PCS)	% of actual size

EXPLANATION OF COLOR COMBINATIONS

All specified color combinations are preset in terms of

- Color of crystal
 - Color of Ceralun
 - Color of Platings
- and are not modifiable.

For ordering BeCharmed Pavé Charms, please follow the example ordering system below.

ORDERING EXAMPLE
& PRODUCT VARIETY EXPLANATION

1	86 502	14 mm	06	223 209	H
Material type	Article number	Size	Color of Ceralun	Color of crystals	Color of plating
1 Brass		height (h)	Please see the respective product matrix for all available reference codes.	Please see the respective product matrix for all available reference codes.	H Rhodium ¹

¹ Anti nickel allergenic

BECHARMED & PAVÉ

BECHARMED PAVÉ CHARMS

86 502 BeCharmed Pavé Heart Charm



Size & color of plating

14x14 mm Rhodium

Colors

- Light Siam F (227)
- Siam F (208)
- Red (21)
- Light Amethyst F (212)
- Amethyst F (204)
- Mauve (14)
- Silk F (391)
- Light Peach F (362)
- Pearl Silk (05)
- Crystal Moonlight F (001 MOL)
- White Opal F (234)
- White (01)
- Light Rose F (223)
- Rose F (209)
- Rose (06)

86 512 BeCharmed Pavé Star Charm



Size & color of plating

14x14 mm Rhodium

Colors

- Crystal Moonlight F (001 MOL)
- White Opal F (234)
- White (01)
- Crystal Silver Shade F (001 SSHA)
- Black Diamond F (215)
- Silver (03)
- Light Amethyst F (212)
- Amethyst F (204)
- Mauve (14)
- Silk F (391)
- Light Peach F (362)
- Pearl Silk (05)

86 522 BeCharmed Pavé Greek Cross Charm



Size & color of plating

14x14 mm Rhodium

Colors

- Crystal Silver Night F (001 SINI)
- Jet F (280)
- Black (02)
- Crystal Moonlight F (001 MOL)
- White Opal F (234)
- White (01)
- Silk F (391)
- Light Peach F (362)
- Pearl Silk (05)
- Crystal F (001)
- Black Diamond F (215)
- Silver (03)
- Crystal Silver Night F (001 SINI)
- Light Sapphire F (211)
- Black (02)

86 532 BeCharmed Pavé Edelweiss Charm



Size & color of plating

14x14 mm Rhodium

Colors

- White Opal F (234)
- Crystal F (001)
- Finest White (01)
- Light Grey Opal F (383)
- Crystal Moonlight F (001 MOL)
- Finest White (01)
- Jonquil F (213)
- White Opal F (234)
- Finest White (01)
- Vintage Rose F (319)
- Crystal Silver Shade F (001 SSHA)
- Finest White (01)
- Light Smoked Topaz F (221)
- Crystal Golden Shadow F (001 GSHA)
- Pearl Silk (05)

BECHARMED & PAVÉ

86 541 BeCharmed Pavé Tiger Charm



Size & color of plating

16x18 mm Rhodium

Colors

Plain Colors

- Jet (280)
- Black (02)

- Montana (207)
- Navy Blue (17)

- Smoked Topaz (220)
- Umber (30)

Crystal Effects

Transparent Effects

- Crystal Silver Night (001 SINI)
- Black (02)

BECHARMED PAVÉ CHARMS

86 553 BeCharmed Pavé Dragonfly Charm



Size & color of plating

18x20 mm Rhodium

Crystal

- Crystal (001)
- White (01)

Colors

Plain Colors

- Montana (207)
- Navy Blue (17)

- Tanzanite (539)
- Lilac (51)

Multicolors

- Tanzanite (539)
- Light Rose (223)
- Siam (208)
- Rose (06)

- Crystal Silver Night (001 SINI)
- Crystal Moonlight (001 MOL)
- Crystal Silver Shade (001 SSHA)
- Silver (03)

BECHARMED & PAVÉ

86 564 BeCharmed Pavé Eye Charm



Size & color of plating

14x8.5 mm Rhodium

Colors

- Jet (280)
- Crystal F (001)
- Crystal Silver Shade F (001 SSHA)
- Sapphire (206)
- Sapphire (33)
- White (01)

- Jet (280)
- Montana (207)
- Indicolite (379)
- Crystal Moonlight (001 MOL)
- Navy Blue (17)
- White (01)

- Crystal Silver Night (001 SINI)
- Crystal AB (001 AB)
- Crystal F (001)
- White (01)

- Jet Hematite (280 HEM)
- Black Diamond F (215)
- Crystal Silver Night (001 SINI)
- Crystal Moonlight (001 MOL)
- Grey (19)
- White (01)

BECHARMED PAVÉ CHARMS

86 574 BeCharmed Pavé Eye Charm¹



Size & color of plating

8.5x14 mm Rhodium

Colors

- Jet (280)
- Crystal F (001)
- Crystal Silver Shade F (001 SSHA)
- Sapphire (206)
- Sapphire (33)
- White (01)

- Jet (280)
- Montana (207)
- Indicolite (379)
- Crystal Moonlight (001 MOL)
- Navy Blue (17)
- White (01)

- Crystal Silver Night (001 SINI)
- Crystal AB (001 AB)
- Crystal F (001)
- White (01)

- Jet Hematite (280 HEM)
- Black Diamond F (215)
- Crystal Silver Night (001 SINI)
- Crystal Moonlight (001 MOL)
- Grey (19)
- White (01)

¹ Available from November 2016 onwards

BECHARMED & PAVÉ




87 000 BeCharmed Crystal Pearl Charm



Size & color of plating

8x8 mm Rhodium

Colors

-  Crystal Light Grey Pearl (001 616)
-  Crystal Rosaline Pearl (001 294)
-  Crystal White Pearl (001 650)

BECHARMED CRYSTAL CHARMS




87 001 BeCharmed Crystal Classic Charm



Size & color of plating

15x7.5 mm Rhodium

Colors

- Plain Colors
-  Light Turquoise (263)
- Crystal Effects
- Transparent Effects
-  Crystal AB (001 AB)
-  Crystal Lilac Shadow (001 LISH)

87 002 BeCharmed Crystal XILION Triangle Charm






Size & color of plating

12x12 mm Rhodium

Crystal Effects

Transparent Effects

-  Crystal AB (001 AB)
-  Crystal Bermuda Blue P (001 BBL) ¹
-  Crystal Silver Night (001 SINI)







87 003 BeCharmed Pavé Ball Charm



Size & color of plating

8x8 mm Rhodium

Crystal

-  Crystal (001)
-  White (01)
- Colors
- Plain Colors
-  Light Rose (223)
-  Rose (06)
- Color Effects
- Metallic Effects
-  Jet Hematite (280 HEM)
-  Black (02)

¹ For details about the protective coating, please refer to the chapter 'Basic Information'.

BECHARMED & PAVÉ

BECHARMED CRYSTAL CHARMS

87 004 BeCharmed Crystal Love Charm



Size & color of plating

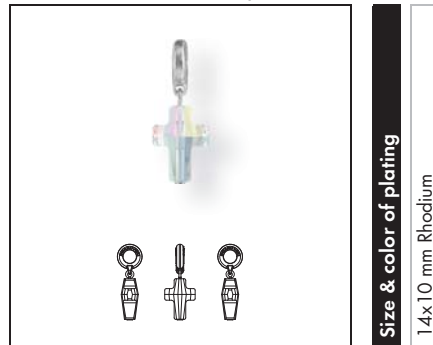
12x11 mm Rhodium

Crystal Effects

Transparent Effects

- Crystal AB (001 AB)
- Crystal Antique Pink (001 ANTP)
- Crystal Golden Shadow (001 GSHA)

87 005 BeCharmed Crystal Cross Charm



Size & color of plating

14x10 mm Rhodium

Crystal Effects

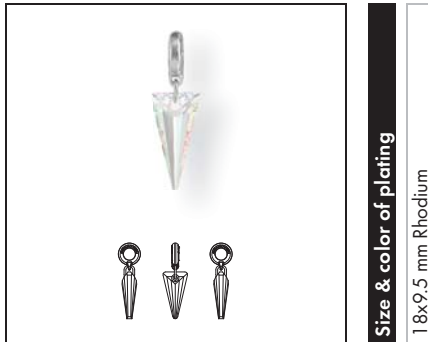
Transparent Effects

- Crystal AB (001 AB)
- Crystal Silver Night 2x (001 SINI2)

Metallic Effects

- Crystal Rose Gold 2x (001 ROGL2)

87 006 BeCharmed Crystal Spike Charm



Size & color of plating

18x9.5 mm Rhodium

Crystal Effects

Transparent Effects

- Crystal AB (001 AB)
- Crystal Bermuda Blue P (001 BBL) ¹
- Crystal Silver Night (001 SINI)

87 007 BeCharmed Crystal Queen Baguette Charm



Size & color of plating

13.5x6 mm Rhodium

Crystal Effects

Transparent Effects

- Crystal AB (001 AB)
- Crystal Golden Shadow (001 GSHA)
- Crystal Silver Night (001 SINI)

¹ For details about the protective coating, please refer to the chapter 'Basic Information'.

BECHARMED & PAVÉ

87 008 BeCharmed Crystal Skull Charm



Size & color of plating

13x10 mm Rhodium

Colors

Plain Colors

● Jet (280)

Crystal Effects

Transparent Effects

● Crystal Silver Night 2x (001 SINI2)

Metallic Effects

● Crystal Metallic Light Gold 2x (001 MLGLD2)

BECHARMED CRYSTAL CHARMS

87 009 BeCharmed Crystal Greek Cross Charm



Size & color of plating

14x14 mm Rhodium

Crystal Effects

Transparent Effects

● Crystal Bermuda Blue P (001 BBL) ¹

● Crystal Silver Night (001 SINI)

Metallic Effects

● Crystal Metallic Sunshine (001 METSH)

¹ For details about the protective coating, please refer to the chapter 'Basic Information'.

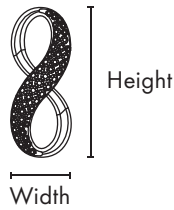
PAVÉ PENDANTS

The Pavé Pendants family is elegantly chic and radiates a delicate sparkle for an easy, everyday style with a soft, feminine touch. It can be paired with other pavé pendants for an effortless, colorful, customized look or

used as a single charm. It makes a charming companion in jewelry designs and brings a strong statement to elegant, glamorous accessories. Its multicolor finish makes it a charismatic eye-catcher that exudes positivity.

ARTICLE EXPLANATION

67 402 Pavé Infinity Pendant



S 20x8 mm	
M 6 PCS	100%

67 402	S	M	100%
Article number	Height x Width h x w	Minimum Order Quantity in pieces (PCS)	% of actual size

EXPLANATION OF "COLOR COMBINATIONS"

All specified color combinations are preset in terms of

- Color of crystal
 - Color of Ceralun
 - Color of Platings
- and are not modifiable.

When ordering Pavé Pendants, please follow the example order system below.

ORDERING EXAMPLE
& PRODUCT VARIETY EXPLANATION

1	67 402	20 mm	45	539 371	H
Material type	Article number	Size	Color of Ceralun	Color of crystals	Color of plating
1 Brass		height (h)	Please see the respective product matrix for all available reference codes.	Please see the respective product matrix for all available reference codes.	H Rhodium ¹

¹ Anti nickel allergenic

67 402 Pavé Infinity Pendant



Size & color of plating

20x8 mm Rhodium

26x10.5 mm Rhodium

Colors

- Tanzanite F (539)
- Violet F (371)
- Mauve (14)
- Black Diamond F (215)
- Crystal F (001)
- Silver (03)
- Light Peach F (362)
- Silk F (391)
- Pearl Silk (05)
- Aquamarine F (202)
- Light Azure F (361)
- Luminous Blue (24)
- Crystal Moonlight F (001 MOL)
- White Opal F (234)
- Finest White (01)

67 412 Pavé Heart Pendant



Size & color of plating

14x12.5 mm Rhodium

20x17.5 mm Rhodium

26x22.5 mm Rhodium

Colors

- Light Siam F (227)
- Siam F (208)
- Red (21)
- Light Amethyst F (212)
- Amethyst F (204)
- Mauve (14)
- Silk F (391)
- Light Peach F (362)
- Pearl Silk (05)
- Crystal Moonlight F (001 MOL)
- White Opal F (234)
- White (01)
- Light Rose F (223)
- Rose F (209)
- Rose (06)

67 422 Pavé Star Pendant



Size & color of plating

14x14 mm Rhodium

20x20 mm Rhodium

26x26 mm Rhodium

Colors

- Crystal Moonlight F (001 MOL)
- White Opal F (234)
- White (01)
- Crystal Silver Shade F (001 SSHA)
- Black Diamond F (215)
- Silver (03)
- Light Amethyst F (212)
- Amethyst F (204)
- Mauve (14)
- Silk F (391)
- Light Peach F (362)
- Pearl Silk (05)

67 432 Pavé Greek Cross Pendant



Size & color of plating

14x14 mm Rhodium

20x20 mm Rhodium

26x26 mm Rhodium

Colors

- Crystal Silver Night F (001 SINI)
- Jet F (280)
- Black (02)
- Crystal Moonlight F (001 MOL)
- White Opal F (234)
- White (01)
- Silk F (391)
- Light Peach F (362)
- Pearl Silk (05)
- Crystal F (001)
- Black Diamond F (215)
- Silver (03)
- Crystal Silver Night F (001 SINI)
- Light Sapphire F (211)
- Black (02)

67 442 Pavé Edelweiss Pendant



Size & color of plating

- 14x14 mm Rhodium
- 20x20 mm Rhodium
- 26x26 mm Rhodium

Colors

- White Opal F (234)
- Crystal F (001)
- Finest White (01)
- Light Grey Opal F (383)
- Crystal Moonlight F (001 MOL)
- Finest White (01)
- Jonquil F (213)
- White Opal F (234)
- Finest White (01)
- Vintage Rose F (319)
- Crystal Silver Shade F (001 SSHA)
- Finest White (01)
- Light Smoked Topaz F (221)
- Crystal Golden Shadow F (001 GSHA)
- Pearl Silk (05)

67 452 Pavé Teardrop Pendant



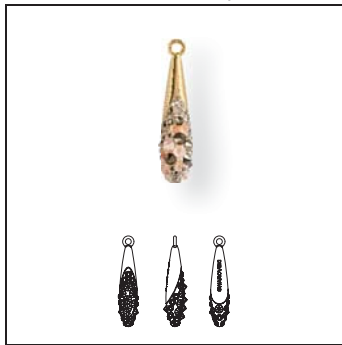
Size & color of plating

- 20x6 mm Gold
- 20x6 mm Rhodium
- 30x7 mm Gold
- 30x7 mm Rhodium

Colors

- Crystal Silver Night F (001 SINI)
- Jet Hematite (280 HEM)
- Black (02)
- Crystal Silver Shade F (001 SSHA)
- Black Diamond F (215)
- Grey (19)
- White Opal F (234)
- Crystal Moonlight F (001 MOL)
- White (01)
- Erinite F (360)
- Crystal Luminous Green F (001 LUMG)
- Dark Green (13)

67 462 Pavé Teardrop Pendant Spikes



Size & color of plating

- 20x6.5 mm Gold
- 30x8 mm Gold

Colors

- Crystal Metallic Light Gold F (001 MLGLD)
- Crystal Golden Shadow F (001 GSHA)
- Pearl Silk (05)

67 472 Pavé Polygon Pendant



Size & color of plating

- 20x5 mm Gold
- 20x5 mm Rhodium
- 30x7.5 mm Gold
- 30x7.5 mm Rhodium

Colors

- Crystal Silver Night F (001 SINI)
- Jet Hematite (280 HEM)
- Black (02)
- Crystal Silver Shade F (001 SSHA)
- Black Diamond F (215)
- Grey (19)
- White Opal F (234)
- Crystal Moonlight F (001 MOL)
- White (01)
- Erinite F (360)
- Crystal Luminous Green F (001 LUMG)
- Dark Green (13)

BECHARMED & PAVÉ

PAVÉ PENDANTS

67 482 Pavé Polygon Pendant Spikes



- Colors**
- Crystal Metallic Light Gold F (001 MLGLD)
 - Crystal Golden Shadow F (001 GSHA)
 - Pearl Silk (05)

Size & color of plating

- 20x5 mm Gold
- 30x7.5 mm Gold

67 492 Pavé Petal Pendant



- Colors**
- Crystal Silver Night F (001 SINI)
 - Jet Hematite (280 HEM)
 - Black (02)
 - Crystal Silver Shade F (001 SSHA)
 - Black Diamond F (215)
 - Grey (19)
 - White Opal F (234)
 - Crystal Moonlight F (001 MOL)
 - White (01)
 - Erinite F (360)
 - Crystal Luminous Green F (001 LUMG)
 - Dark Green (13)

Size & color of plating

- 20x9 mm Gold
- 20x9 mm Rhodium
- 30x12 mm Gold
- 30x12 mm Rhodium

67 502 Pavé Petal Pendant Spikes



- Colors**
- Crystal Metallic Light Gold F (001 MLGLD)
 - Crystal Golden Shadow F (001 GSHA)
 - Pearl Silk (05)

Size & color of plating

- 20x9 mm Gold
- 30x12 mm Gold

67 511 Tiger Pavé Pendant



	16x16 mm Rhodium	22x22 mm Rhodium	16x16 mm Gold	22x22 mm Gold	16x16 mm Gun Metal	22x22 mm Gun Metal
Crystal						
● Crystal (001)			■	■	■	■
○ White (01)						
Colors						
Plain Colors						
● Jet (280)	■	■				
● Black (02)						
● Montana (207)	■	■				
● Navy Blue (17)						
● Smoked Topaz (220)	■	■	■	■		
● Umber (30)						
● Topaz F (203)					■	■
● Shining Curry (12)						
Crystal Effects						
Transparent Effects						
● Crystal Silver Night (001 SINI)	■	■				
● Black (02)						
Color Effects						
Metallic Effects						
● Jet Hematite (280 HEM)			■	■		
● Black (02)						

67 523 Dragonfly Pavé Pendant



Size & color of plating	18x16 mm Rhodium	30x25 mm Rhodium	18x26 mm Gold	30x25 mm Gold
-------------------------	------------------	------------------	---------------	---------------

Crystal

- Crystal (001)
- White (01)

Colors

Plain Colors

- Montana (207)
- Navy Blue (17)
- Peridot (214)
- Pearl Jade (40)
- Rose (209)
- Shining Red (07)
- Tanzanite (539)
- Lilac (51)

Crystal Effects

Transparent Effects

- Crystal Golden Shadow (001 GSHA)
- Pearl Silk (05)

Multicolors

- Tanzanite (539)
- Light Rose (223)
- Siam (208)
- Rose (06)
- Crystal Silver Night (001 SINI)
- Crystal Moonlight (001 MOL)
- Crystal Silver Shade (001 SSHA)
- Silver (03)
- Montana (207)
- Peridot (214)
- Jonquil (213)
- Navy Blue (17)
- Siam (208)
- Light Colorado Topaz (246)
- Crystal Golden Shadow (001 GSHA)
- Pearl Silk (05)

67 534 Pavé Eye Pendant



Size & color of plating

- 14x8.5 mm Rhodium
- 20x12.5 mm Rhodium
- 14x8.5 mm Gold
- 20x12.5 mm Gold

Colors

- Jet (280)
- Crystal F (001)
- Crystal Silver Shade F (001 SSHA)
- Sapphire (206)
- Sapphire (33)
- White (01)

- Jet (280)
- Montana (207)
- Indicolite (379)
- Crystal Moonlight (001 MOL)
- Navy Blue (17)
- White (01)

- Crystal Silver Night (001 SINI)
- Crystal AB (001 AB)
- Crystal (001)
- White (01)

- Jet Hematite (280 HEM)
- Black Diamond F (215)
- Crystal Silver Night (001 SINI)
- Crystal Moonlight (001 MOL)
- Grey (19)
- White (01)

- Light Smoked Topaz F (221)
- Crystal Golden Shadow F (001 GSHA)
- Crystal Metallic Light Gold F (001 MLGLD)
- Pearl Silk (05)
- Antique Gold (35)

- Jet (280)
- Indicolite (379)
- Aquamarine (202)
- Crystal (001)
- Indicolite (50)
- White (01)

- Jet (280)
- Smoked Topaz (220)
- Light Smoked Topaz F (221)
- Crystal Golden Shadow F (001 GSHA)
- Pearl Silk (05)
- Umber (30)

- Jet Hematite (280 HEM)
- Erinite (360)
- Chrysolite (238)
- Crystal Golden Shadow F (001 GSHA)
- Crystal Silver Shade F (001 SSHA)
- Dark Green (13)
- Pearl Silk (05)

67 544 Pavé Eye Pendant¹



Size & color of plating

- 8.5x14 mm Rhodium
- 12.5x20 mm Rhodium
- 8.5x14 mm Gold
- 12.5x20 mm Gold

Colors

- Jet (280)
- Crystal F (001)
- Crystal Silver Shade F (001 SSHA)
- Sapphire (206)
- Sapphire (33)
- White (01)

- Jet (280)
- Montana (207)
- Indicolite (379)
- Crystal Moonlight (001 MOL)
- Navy Blue (17)
- White (01)

- Crystal Silver Night (001 SINI)
- Crystal AB (001 AB)
- Crystal (001)
- White (01)

- Jet Hematite (280 HEM)
- Black Diamond F (215)
- Crystal Silver Night (001 SINI)
- Crystal Moonlight (001 MOL)
- Grey (19)
- White (01)

- Light Smoked Topaz F (221)
- Crystal Golden Shadow F (001 GSHA)
- Crystal Metallic Light Gold F (001 MLGLD)
- Pearl Silk (05)
- Antique Gold (35)

- Jet (280)
- Indicolite (379)
- Aquamarine (202)
- Crystal (001)
- Indicolite (50)
- White (01)

- Jet (280)
- Smoked Topaz (220)
- Light Smoked Topaz F (221)
- Crystal Golden Shadow F (001 GSHA)
- Pearl Silk (05)
- Umber (30)

- Jet Hematite (280 HEM)
- Erinite (360)
- Chrysolite (238)
- Crystal Golden Shadow F (001 GSHA)
- Crystal Silver Shade F (001 SSHA)
- Dark Green (13)
- Pearl Silk (05)

¹ Available from November 2016 onwards

BECHARMED & PAVÉ

PRODUCT DETAILS

04 BECHARMED & PAVÉ

Article Size	Packing Unit = Minimum Order Quantity in Pieces	Average Net Weight in Grams per Packing Unit Crystal (001)	Average Gross Weight in Grams per Packing Unit Crystal (001)
5890 14x9.3 mm	12	29.1	48.6
5928 14x9.3 mm	12	26.2	45.7
5929 14x6.7 mm	12	19.12	38.6
5948 14x9.3 mm	12	27.2	46.7
67 402 20x8 mm 26x10.5 mm	6 6	6.0 10.2	26.0 30.0
67 412 14x12.5 mm 20x17.5 mm 26x22.5 mm	12 6 3	19.2 23.4 23.7	40.0 43.0 43.0
67 422 14x14 mm 20x20 mm 26x26 mm	12 6 3	14.4 18.0 21.3	34.0 37.0 40.0
67 432 14x14 mm 20x20 mm 26x26 mm	12 6 3	13.8 19.2 22.5	34.0 38.0 42.0
67 442 14x14 mm 20x20 mm 26x26 mm	12 6 3	9.6 15.0 16.5	29.0 34.0 35.0
67 452 20x6 mm 30x7 mm	12 8	16.2 25.2	35.2 44.0
67 462 20x6 mm 30x8 mm	12 8	16.8 26.4	35.8 45.5
67 472 20x5 mm 30x7.5 mm	12 8	13.8 27.2	32.8 46.0
67 482 20x5 mm 30x7.5 mm	12 8	14.4 27.6	33.5 46.5
67 492 20x9 mm 30x12 mm	12 8	33.0 43.2	52.0 62.0
67 502 20x9 mm 30x12 mm	12 8	33.6 44.0	52.6 63.0
67 511 16x16 mm 22x22 mm	6 6	31.2 63.0	53.0 82.5
67 523 18x16 mm 30x25 mm	6 3	4.8 9.9	24.0 29.0

BECHARMED & PAVÉ

Article Size	Packing Unit = Minimum Order Quantity in Pieces	Average Net Weight in Grams per Packing Unit Crystal (001)	Average Gross Weight in Grams per Packing Unit Crystal (001)
67 534			
14x8.5 mm	6	7.3	27.6
20x12.5 mm	6	18	37.8
67 544			
8.5x14 mm	6	7.3	27.6
12.5x20 mm	6	18	37.8
77 510			
10x3.8 mm	144	63.4	66.6
10x3.8 mm	144	63.4	66.6
77 512			
12x4.5 mm	144	112.3	115.5
80 000			
180 mm	6	30.2	41.8
190 mm	6	31.1	44.1
203 mm	6	38.8	51.5
80 101			
14x9.3 mm	12	38.4	57.9
80 201			
15x9.3 mm	12	40.8	60.3
80 301			
10.5x9.3 mm	12	19.7	39.2
80 401			
16x9.3 mm	12	31.9	51.4
80 901			
11.5x9.3 mm	12	18.6	38.1
80 912			
11.5x22 mm	8	32.0	52.0
80 921			
13x22 mm	8	64.0	84.0
81 100			
12x6 mm	12	55.2	74.7
81 001			
15x3.3 mm	12	20.2	39.7
81 101			
13.5x6.7 mm	12	17.9	37.9
81 201			
13x6.7 mm	12	16.8	36.3
81 304			
14x9.3 mm	12	31.8	51.3
81 403			
14x9.3 mm	12	34.8	54.3
81 504			
14x9.3 mm	12	30.0	49.5
81 601			
14x9.3 mm	12	34.8	54.3
81 702			
13.5x6.7 mm	12	18.0	37.5
81 712			
15x9.3 mm	12	30.6	50.1

BECHARMED & PAVÉ

PRODUCT DETAILS

04 BECHARMED & PAVÉ

Article Size	Packing Unit = Minimum Order Quantity in Pieces	Average Net Weight in Grams per Packing Unit Crystal (001)	Average Gross Weight in Grams per Packing Unit Crystal (001)
81 722 15.5x9.3 mm	12	33.6	53.1
81 732 14.5x9.3 mm	12	34.8	54.3
81 773 14x9.3 mm	12	34.2	53.7
81 785 14x9.3 mm	12	34.2	53.7
81 795 14x9.3 mm	12	34.2	53.7
81 805 14x9.3 mm	12	34.2	53.7
81 815 14x9.3 mm	12	34.2	53.7
81 823 14x9.3 mm	12	34.2	53.7
81 833 14x9.3 mm	12	32.4	51.9
81 844 14x9.3 mm	12	33.6	53.1
81 852 14x9.3 mm	12	33.6	53.1
81 864 14x9.3 mm	12	33.6	53.1
81 873 14x9.3 mm	12	33.6	53.1
81 951 14x12.9 mm	12	66.0	86.0
81 961 13.5x11.9 mm	12	51.0	71.0
81 974 10x22 mm	8	30.4	50.5
81 982 10x22 mm	8	30.4	50.5
82 013 14.5x9.3 mm	12	34.2	52.2
82 023 14.5x9.3 mm	12	34.2	52.2
82 033 14.5x9.3 mm	12	34.2	52.2
82 043 14.5x9.3 mm	12	34.2	52.2
82 053 14x9.3 mm	12	34.2	52.2
82 063 14x9.3 mm	12	34.2	52.2
82 072 13.5x6.7 mm	12	17.9	37.9

BECHARMED & PAVÉ

Article Size	Packing Unit = Minimum Order Quantity in Pieces	Average Net Weight in Grams per Packing Unit Crystal (001)	Average Gross Weight in Grams per Packing Unit Crystal (001)
84 302 14x9.3 mm	12	34.8	54.3
84 501 14x9.3 mm	12	38.4	57.9
85 001 14.5x4.5 mm	6	7.2	26.3
16.5x4.5 mm	6	8.4	27.5
18.5x4.5 mm	6	9.0	28.7
86 001 4 mm	12	1.1	20.6
6 mm	12	3.5	23.0
8 mm	12	7.8	27.3
10 mm	12	14.5	34.0
86 502 14x14 mm	12	28.2	47.7
86 512 14x14 mm	12	24.0	43.5
86 522 14x14 mm	12	23.4	42.9
86 532 14x14 mm	12	18.0	37.5
86 541 16x18 mm	6	36.0	55.5
86 553 18x20 mm	6	14.1	47.7
86 564 14x8.5 mm	6	12.6	32.4
86 574 8.5x14 mm	6	12.6	32.4
87 000 8x8 mm	6	9.6	28.7
87 001 15x7.5 mm	6	10.2	29.3
87 002 12x12 mm	6	9.9	29.0
87 003 8x8 mm	6	9.0	28.1
87 004 12x11 mm	6	9.9	29.0
87 005 14x10 mm	6	11.1	30.2
87 006 18x9.5 mm	6	10.5	29.6
87 007 13.5x6 mm	6	8.4	27.5
87 008 13x10 mm	6	19.8	38.9
87 009 14x14 mm	6	9.9	29.0